

CHATHAM COUNTY PURCHASING & CONTRACTING DEPARTMENT

ADDENDUM NO. 1 TO 17-0107-4

**FOR: MONTGOMERY STREET JAIL DEMOLITION**

---

**PLEASE SEE THE FOLLOWING FOR ADDITIONS, CLARIFICATIONS AND/OR CHANGES:**

1. SEE ATTACHED *DIVISION 02- EXISTING CONDITIONS, SECTION 02 84 16, HANDLING OF LIGHTING BALLASTS AND LAMPS CONTAINING PCBs AND MERCURY.*
2. SEE ATTACHED *FINAL ASBESTOS ABATEMENT REPORT.*
3. SEE ATTACHED *JAIL ASBESTOS SURVEY.*
4. SEE ATTACHED *REPORT OF TCLP LEAD RESULTS FOR DEMOLITION DEBRIS.*

**NOTE:** ORIGINAL 1974 CONSTRUCTION PLANS OF THE JAIL FACILITY HAVE BEEN ADDED TO PURCHASING WEBSITE ( [purchasing@chathamcounty.org](mailto:purchasing@chathamcounty.org) ) FOR REFERENCE.

---


**BID OPENING REMAINS:**

**2PM, WEDNESDAY, NOVEMBER 29, 2017**

---

**THE PROPOSER IS RESPONSIBLE FOR MAKING THE NECESSARY CHANGES AND MUST ACKNOWLEDGE RECEIPT OF ADDENDUM.**

11/16/17  
DATE

  
ROBERT E. MARSHALL  
SENIOR PROCUREMENT SPECIALIST  
CHATHAM COUNTY

\*\*\*\*\*  
USACE / NAVFAC / AFCEC / NASA UFGS-02 84 16 (April 2006)

Preparing Activity: NAVFAC

-----  
Replacing without change  
UFGS-13286 (August 2004)

## UNIFIED FACILITIES GUIDE SPECIFICATION

References are in agreement with UMRL dated April 2017

\*\*\*\*\*

### SECTION TABLE OF CONTENTS

#### DIVISION 02 - EXISTING CONDITIONS

#### SECTION 02 84 16

#### HANDLING OF LIGHTING BALLASTS AND LAMPS CONTAINING PCBs AND MERCURY

04/06

#### PART 1 GENERAL

- 1.1 REFERENCES
- 1.2 REQUIREMENTS
- 1.3 DEFINITIONS
  - 1.3.1 Certified Industrial Hygienist (CIH)
  - 1.3.2 Leak
  - 1.3.3 Lamps
  - 1.3.4 Polychlorinated Biphenyls (PCBs)
  - 1.3.5 Spill
  - 1.3.6 Universal Waste
- 1.4 QUALITY ASSURANCE
  - 1.4.1 Regulatory Requirements
  - 1.4.2 Training
  - 1.4.3 Regulation Documents
- 1.5 SUBMITTALS
- 1.6 ENVIRONMENTAL REQUIREMENTS
- 1.7 SCHEDULING
- 1.8 QUALITY ASSURANCE
  - 1.8.1 Qualifications of CIH
  - 1.8.2 PCB and Lamp Removal Work Plan
  - 1.8.3 PCB and Lamp Disposal Plan

#### PART 2 PRODUCTS

#### PART 3 EXECUTION

- 3.1 WORK PROCEDURE
  - 3.1.1 Work Operations
- 3.2 PCB SPILL CLEANUP REQUIREMENTS
  - 3.2.1 PCB Spills
  - 3.2.2 PCB Spill Control Area
  - 3.2.3 PCB Spill Cleanup
  - 3.2.4 Records and Certification
- 3.3 REMOVAL

- 3.3.1 Ballasts
- 3.3.2 Lighting Lamps
- 3.4 STORAGE FOR DISPOSAL
  - 3.4.1 Storage Containers for PCBs
  - 3.4.2 Storage Containers for lamps
  - 3.4.3 Labeling of Waste Containers
- 3.5 DISPOSAL
  - 3.5.1 Identification Number
  - 3.5.2 Transporter Certification
    - 3.5.2.1 Certificate of Disposal and/or Recycling
  - 3.5.3 Disposal by the Government
    - 3.5.3.1 [Delivery] [Government Pick Up]
    - 3.5.3.2 DD Form 1348-1

-- End of Section Table of Contents --

\*\*\*\*\*  
USACE / NAVFAC / AFCEC / NASA UFGS-02 84 16 (April 2006)  
-----  
Preparing Activity: NAVFAC Replacing without change  
UFGS-13286 (August 2004)

## UNIFIED FACILITIES GUIDE SPECIFICATION

References are in agreement with UMRL dated April 2017

\*\*\*\*\*

### SECTION 02 84 16

#### HANDLING OF LIGHTING BALLASTS AND LAMPS CONTAINING PCBs AND MERCURY 04/06

\*\*\*\*\*

NOTE: This guide specification covers the requirements for removal and disposal of polychlorinated biphenyl (PCB) containing lighting ballasts and mercury containing lamps, and the handling of resulting wastes.

Adhere to UFC 1-300-02 Unified Facilities Guide Specifications (UFGS) Format Standard when editing this guide specification or preparing new project specification sections. Edit this guide specification for project specific requirements by adding, deleting, or revising text. For bracketed items, choose applicable item(s) or insert appropriate information.

Remove information and requirements not required in respective project, whether or not brackets are present.

Comments, suggestions and recommended changes for this guide specification are welcome and should be submitted as a Criteria Change Request (CCR).

\*\*\*\*\*

\*\*\*\*\*

NOTE: Do not use this section if, in addition to ballasts, other PCB removal and disposal is included in the job, but use Section 02 84 33 REMOVAL AND DISPOSAL OF POLYCHLORINATED BIPHENYLS (PCBS) and include the removal and disposal of the ballasts in that section. Also, use Section 02 84 33 where a significant number of ballasts are known to be leaking.

\*\*\*\*\*

## PART 1 GENERAL

### 1.1 REFERENCES

\*\*\*\*\*

NOTE: This paragraph is used to list the



publications cited in the text of the guide specification. The publications are referred to in the text by basic designation only and listed in this paragraph by organization, designation, date, and title.

Use the Reference Wizard's Check Reference feature when you add a Reference Identifier (RID) outside of the Section's Reference Article to automatically place the reference in the Reference Article. Also use the Reference Wizard's Check Reference feature to update the issue dates.

References not used in the text will automatically be deleted from this section of the project specification when you choose to reconcile references in the publish print process.

\*\*\*\*\*

The publications listed below form a part of this specification to the extent referenced. The publications are referred to within the text by the basic designation only.

#### DISTRICT OF COLUMBIA MUNICIPAL REGULATIONS (DCMR)

20 DCMR	(1997) Environment - Chapters 40 to 70, Subtitle E: Hazardous Waste, Chapters 40 - 70
---------	---

#### STATE OF MARYLAND CODE OF MARYLAND REGULATIONS (COMAR)

COMAR 26.13	(1988) Chapters .01- .13, Disposal of Controlled Hazardous Substances
-------------	--

#### STATE OF VIRGINIA ADMINISTRATIVE CODE (VAC)

9 VAC 20-60	Title 9, Agency 20, Chapter 60: Hazardous Waste Management Regulations
9 VAC 20-80	Title 9, Agency 20, Chapter 80: Solid Waste Management Regulations

#### U.S. NATIONAL ARCHIVES AND RECORDS ADMINISTRATION (NARA)

29 CFR 1910.1000	Air Contaminants
40 CFR 260	Hazardous Waste Management System: General
40 CFR 261	Identification and Listing of Hazardous Waste
40 CFR 262	Standards Applicable to Generators of Hazardous Waste
40 CFR 263	Standards Applicable to Transporters of Hazardous Waste
40 CFR 264	Standards for Owners and Operators of Hazardous Waste Treatment, Storage, and

## Disposal Facilities

40 CFR 265	Interim Status Standards for Owners and Operators of Hazardous Waste Treatment, Storage, and Disposal Facilities
40 CFR 268	Land Disposal Restrictions
40 CFR 270	EPA Administered Permit Programs: The Hazardous Waste Permit Program
40 CFR 273	Standards For Universal Waste Management
40 CFR 761	Polychlorinated Biphenyls (PCBs) Manufacturing, Processing, Distribution in Commerce, and Use Prohibitions
49 CFR 178	Specifications for Packagings

## 1.2 REQUIREMENTS

Removal and disposal of PCB containing lighting ballasts and associated mercury-containing lamps. Contractor may encounter leaking PCB ballasts.

## 1.3 DEFINITIONS

### 1.3.1 Certified Industrial Hygienist (CIH)

A industrial hygienist hired by the contractor shall be certified by the American Board of Industrial Hygiene.

### 1.3.2 Leak

Leak or leaking means any instance in which a PCB article, PCB container, or PCB equipment has any PCBs on any portion of its external surface.

### 1.3.3 Lamps

Lamp, also referred to as "universal waste lamp", is defined as the bulb or tube portion of an electric lighting device. A lamp is specifically designed to produce radiant energy, most often in the ultraviolet, visible, and infra-red regions of the electromagnetic spectrum. Examples of common universal waste electric lamps include, but are not limited to, fluorescent, high intensity discharge, neon, mercury vapor, high pressure sodium, and metal halide lamps.

### 1.3.4 Polychlorinated Biphenyls (PCBs)

PCBs as used in this specification shall mean the same as PCBs, PCB containing lighting ballast, and PCB container, as defined in 40 CFR 761, Section 3, Definitions.

### 1.3.5 Spill

Spill means both intentional and unintentional spills, leaks, and other uncontrolled discharges when the release results in any quantity of PCBs running off or about to run off the external surface of the equipment or other PCB source, as well as the contamination resulting from those releases.

#### 1.3.6 Universal Waste

Universal Waste means any of the following hazardous wastes that are managed under the universal waste requirements 40 CFR 273:

- (1) Batteries as described in Sec. 273.2 of this chapter;
- (2) Pesticides as described in Sec. 273.3 of this chapter;
- (3) Thermostats as described in Sec. 273.4 of this chapter; and
- (4) Lamps as described in Sec. 273.5 of this chapter.

#### 1.4 QUALITY ASSURANCE

##### 1.4.1 Regulatory Requirements

Perform PCB related work in accordance with 40 CFR 761 and [COMAR 26.13] [9 VAC 20-60 and 9 VAC 20-80] [20 DCMR]. [Perform mercury-containing lamps storage and transport in accordance with 40 CFR 261, 40 CFR 264, 40 CFR 265, 40 CFR 273 and [COMAR 26.13] [9 VAC 20-60 and 9 VAC 20-80] [20 DCMR].]

##### 1.4.2 Training

Certified industrial hygienist (CIH) shall instruct and certify the training of all persons involved in the removal of PCB containing lighting ballasts and mercury-containing lamps. The instruction shall include: The dangers of PCB and mercury exposure, decontamination, safe work practices, and applicable OSHA and EPA regulations. The CIH shall review and approve the PCB and Mercury-Containing Lamp Removal Work Plans.

##### 1.4.3 Regulation Documents

Maintain at all times one copy each at the office and one copy each in view at the job site of 29 CFR 1910.1000, 40 CFR 260, 40 CFR 261, 40 CFR 262, 40 CFR 263, 40 CFR 265, 40 CFR 268, 40 CFR 270, 40 CFR 273 and [COMAR 26.13] [9 VAC 20-60 9 VAC 20-80] [20 DCMR] and of the Contractor removal work plan and disposal plan for PCB and for associated mercury-containing lamps.

#### 1.5 SUBMITTALS

\*\*\*\*\*

NOTE: Review Submittal Description (SD) definitions in Section 01 33 00 SUBMITTAL PROCEDURES and edit the following list to reflect only the submittals required for the project.

The Guide Specification technical editors have designated those items that require Government approval, due to their complexity or criticality, with a "G". Generally, other submittal items can be reviewed by the Contractor's Quality Control System. Only add a "G" to an item, if the submittal is sufficiently important or complex in context of the project.

For submittals requiring Government approval on Army projects, a code of up to three characters within the submittal tags may be used following the "G" designation to indicate the approving authority. Codes for Army projects using the Resident Management System (RMS) are: "AE" for

Architect-Engineer; "DO" for District Office (Engineering Division or other organization in the District Office); "AO" for Area Office; "RO" for Resident Office; and "PO" for Project Office. Codes following the "G" typically are not used for Navy, Air Force, and NASA projects.

Use the "S" classification only in SD-11 Closeout Submittals. The "S" following a submittal item indicates that the submittal is required for the Sustainability eNotebook to fulfill federally mandated sustainable requirements in accordance with Section 01 33 29 SUSTAINABILITY REPORTING.

Choose the first bracketed item for Navy, Air Force and NASA projects, or choose the second bracketed item for Army projects.

\*\*\*\*\*

Government approval is required for submittals with a "G" designation; submittals not having a "G" designation are [for Contractor Quality Control approval.][for information only. When used, a designation following the "G" designation identifies the office that will review the submittal for the Government.] Submittals with an "S" are for inclusion in the Sustainability eNotebook, in conformance to Section 01 33 29 SUSTAINABILITY REPORTING. Submit the following in accordance with Section 01 33 00 SUBMITTAL PROCEDURES:

#### SD-07 Certificates

Qualifications of CIH; G[, [\_\_\_\_]]

Training Certification; G[, [\_\_\_\_]]

PCB and Lamp Removal Work Plan; G[, [\_\_\_\_]]

PCB and Lamp Disposal Plan; G[, [\_\_\_\_]]

#### SD-11 Closeout Submittals

Transporter certification of notification to EPA of their PCB waste activities and EPA ID numbers; G[, [\_\_\_\_]]

Certification of Decontamination

Certificate of Disposal and/or recycling. Submit to the Government before application for payment within 30 days of the date that the disposal of the PCB and mercury-containing lamp waste identified on the manifest was completed.

DD Form 1348-1

[ Testing results

#### ]1.6 ENVIRONMENTAL REQUIREMENTS

Use special clothing:

- a. Disposable gloves (polyethylene)

- b. Eye protection
- c. PPE as required by CIH

#### 1.7 SCHEDULING

Notify the Contracting Officer 20 days prior to the start of PCB and mercury-containing lamp removal work.

#### 1.8 QUALITY ASSURANCE

##### 1.8.1 Qualifications of CIH

Submit the name, address, and telephone number of the Industrial Hygienist selected to perform the duties in paragraph entitled "Certified Industrial Hygienist." Submit training certification that the Industrial Hygienist is certified, including certification number and date of certification or re certification.

##### 1.8.2 PCB and Lamp Removal Work Plan

Submit a job-specific plan within [20] [\_\_\_\_\_] calendar days after award of contract of the work procedures to be used in the removal, packaging, and storage of PCB-containing lighting ballasts and associated mercury-containing lamps. Include in the plan: Requirements for Personal Protective Equipment (PPE), spill cleanup procedures and equipment, eating, smoking and restroom procedures. The plan shall be approved and signed by the Certified Industrial Hygienist. Obtain approval of the plan by the Contracting Officer prior to the start of PCB and/or lamp removal work.

##### 1.8.3 PCB and Lamp Disposal Plan

\*\*\*\*\*

NOTE: If Government disposal of PCB waste is available by the station, then omit this paragraph. Verify that Government disposal is available and make arrangements if so.

\*\*\*\*\*

Submit a PCB and lamp Disposal Plan with [45] [\_\_\_\_\_] calendar days after award of contract. The PCB and Lamp Disposal Plan shall comply with applicable requirements of federal, state, and local PCB and Universal waste regulations and address:

- a. Estimated quantities of wastes to be generated, disposed of, and recycled.
- b. Names and qualifications of each Contractor that will be transporting, storing, treating, and disposing of the wastes. Include the facility location. Furnish two copies of EPA and state PCB and mercury-containing lamp waste permit applications and EPA identification numbers, as required.
- c. Names and qualifications (experience and training) of personnel who will be working on-site with PCB and mercury-containing lamp wastes.
- d. Spill prevention, containment, and cleanup contingency measures to be implemented.

- e. Work plan and schedule for PCB and mercury-containing lamp waste removal, containment, storage, transportation, disposal and or recycling. Wastes shall be cleaned up and containerize daily.

## PART 2 PRODUCTS

Not used.

## PART 3 EXECUTION

### 3.1 WORK PROCEDURE

Furnish labor, materials, services, and equipment necessary for the removal of PCB containing lighting ballasts, associated mercury-containing fluorescent lamps, [and high intensity discharge (HID) lamps] in accordance with local, state, or federal regulations. Do not expose PCBs to open flames or other high temperature sources since toxic decomposition by-products may be produced. Do not break mercury containing fluorescent lamps or high intensity discharge lamps.

#### 3.1.1 Work Operations

Ensure that work operations or processes involving PCB or PCB-contaminated materials are conducted in accordance with 40 CFR 761, 40 CFR 262 40 CFR 263, and the applicable requirements of this section, including but not limited to:

- a. Obtaining suitable PCB and mercury-containing lamp storage sites.
- b. Notifying Contracting Officer prior to commencing the operation.
- c. Reporting leaks and spills to the Contracting Officer.
- d. Cleaning up spills.
- e. Inspecting PCB and PCB-contaminated items and waste containers for leaks and forwarding copies of inspection reports to the Contracting Officer.
- f. Maintaining inspection, inventory and spill records.

### 3.2 PCB SPILL CLEANUP REQUIREMENTS

#### 3.2.1 PCB Spills

Immediately report to the Contracting Officer any PCB spills.

#### 3.2.2 PCB Spill Control Area

Rope off an area around the edges of a PCB leak or spill and post a "PCB Spill Authorized Personnel Only" caution sign. Immediately transfer leaking items to a drip pan or other container.

#### 3.2.3 PCB Spill Cleanup

40 CFR 761, subpart G. Initiate cleanup of spills as soon as possible, but no later than 24 hours of its discovery. Mop up the liquid with rags or other conventional absorbent. The spent absorbent shall be properly

contained and disposed of as solid PCB waste.

### 3.2.4 Records and Certification

Document the cleanup with records of decontamination in accordance with 40 CFR 761, Section 125, Requirements for PCB Spill Cleanup. Provide test results of cleanup and certification of decontamination.

## 3.3 REMOVAL

### 3.3.1 Ballasts

\*\*\*\*\*

**NOTE: If there are less than 1600 lighting ballasts to be removed and disposed, delete the bracketed sentence.**

\*\*\*\*\*

As ballast are removed from the lighting fixture, inspect label on ballast. Ballasts without a "No PCB" label shall be assumed to contain PCBs and containerized and disposed of as required under paragraphs STORAGE FOR DISPOSAL and DISPOSAL. If there are less than 1600 "No PCB" labeled lighting ballasts dispose of them as normal demolition debris. [If there are more than 1600 "No PCB" labeled ballasts, establish whether the "No PCB" labeled ballasts contain diethylhexyl phthalate (DEHP) either by test or by checking with the ballast manufacturer indicated on the label. Submit testing results and/or written confirmation from the manufacturer to the Contracting Officer. If the ballasts do not contain DEHP, dispose of them as normal construction debris. If they do contain DEHP, dispose of them as hazardous material in accordance with Federal, State, and local regulations. As a basis of bid assume ballasts with "No PCB" labels do not contain DEHP and may disposed of as normal construction debris. If 1600 or more DEHP ballasts are disposed of in a 24 hour period, notify the National Response Team at 800-424-8802.]

### 3.3.2 Lighting Lamps

Remove lighting tubes/lamps from the lighting fixture and carefully place (unbroken) into appropriate containers (original transport boxes or equivalent). In the event of a lighting tube/lamp breaking, sweep and place waste in double plastic taped bags and dispose of as universal waste as specified herein.

## 3.4 STORAGE FOR DISPOSAL

### 3.4.1 Storage Containers for PCBs

49 CFR 178. Store PCB in containers approved by DOT for PCB.

### 3.4.2 Storage Containers for lamps

Store mercury containing lamps in appropriate DOT containers. The boxes shall be stored and labeled for transport in accordance with 40 CFR 273.

### 3.4.3 Labeling of Waste Containers

Label with the following:

- a. Date the item was placed in storage and the name of the cognizant

activity/building.

- b. "Caution Contains PCB," conforming to 40 CFR 761, CFR Subpart C. Affix labels to PCB waste containers.
- c. Label mercury-containing lamp waste in accordance with 40 CFR 273. Affix labels to all lighting waste containers.

### 3.5 DISPOSAL

Dispose of off Government property in accordance with EPA, DOT, and local regulations at a permitted site.

#### 3.5.1 Identification Number

Federal regulations 40 CFR 761, and 40 CFR 263 require that generators, transporters, commercial storers, and disposers of PCB waste possess U.S. EPA identification numbers. The contractor shall verify that the activity has a U.S. EPA generator identification number for use on the Uniform Hazardous Waste manifest. If not, the contractor shall advise the activity that it must file and obtain an I.D. number with EPA prior to commencement of removal work. For mercury containing lamp removal, Federal regulations 40 CFR 273 require that large quantity handlers of Universal waste (LQHUW) must provide notification of universal waste management to the appropriate EPA Region (or state director in authorized states), obtain an EPA identification number, and retain for three years records of off-site shipments of universal waste. The contractor shall verify that the activity has a U.S. EPA generator identification number for use on the Universal Waste manifest. If not, the contractor shall advise the activity that it must file and obtain an I.D. number with EPA prior to commencement of removal work.

#### 3.5.2 Transporter Certification

\*\*\*\*\*

NOTE: Choose this option and subparagraphs if the  
Contractor is to dispose of PCB waste.

\*\*\*\*\*

Comply with disposal and transportation requirements outlined in 40 CFR 761 and 40 CFR 263. Before transporting the PCB waste, sign and date the manifest acknowledging acceptance of the PCB waste from the Government. Return a signed copy to the Government before leaving the job site. Ensure that the manifest accompanies the PCB waste at all times. Submit transporter certification of notification to EPA of their PCB waste activities (EPA Form 7710-53).

##### 3.5.2.1 Certificate of Disposal and/or Recycling

40 CFR 761. Certificate for the PCBs and PCB items disposed shall include:

- a. The identity of the disposal and or recycling facility, by name, address, and EPA identification number.
- b. The identity of the PCB waste affected by the Certificate of Disposal including reference to the manifest number for the shipment.
- c. A statement certifying the fact of disposal and or recycling of the identified PCB waste, including the date(s) of disposal, and



identifying the disposal process used.

d. A certification as defined in 40 CFR 761.

### 3.5.3 Disposal by the Government

\*\*\*\*\*

NOTE: Choose this option and subparagraphs if PCB waste transportation and disposal has been arranged with PWD/PWC and PCB waste is to be delivered to suitable storage site. Verify procedures with PWD/PWC. Omit paragraph when the Government will pick up PCB waste at the project site.

\*\*\*\*\*

Comply with disposal and transportation requirements outlined in 40 CFR 761 and 40 CFR 263. Load and haul PCBs to the storage site at [\_\_\_\_], operated by the Defense Reutilization and Marketing Officer (DRMO). If the primary [\_\_\_\_] site is filled to capacity, contact the Contracting Officer. The transport distance to any storage site will not exceed the distance between the project site and the DRMO storage site at [\_\_\_\_].

#### 3.5.3.1 [Delivery] [Government Pick Up]

\*\*\*\*\*

NOTE: Choose the option for Government pick up if arrangements have been made for the Government to pick up the PCB waste at the project site. This will be required when DRMO does not have a suitable storage site and the PCB waste must be picked up by the Government's PCB disposal contractor.

\*\*\*\*\*

Contact DRMO at least 5 working days in advance to make arrangements for [delivery of PCB to the storage site.] [pick up of PCB waste by the Government.] Phone [\_\_\_\_] or write to:

Defense Reutilization and Marketing Office  
[\_\_\_\_]  
[\_\_\_\_]

#### 3.5.3.2 DD Form 1348-1

Prepare DD Form 1348-1 Turn-in Document (TID), which will accompany the PCB to the storage site. Ensure that a responsible person from the activity that owns the PCB signs the DD Form 1348-1.

-- End of Section --



ARROWWOODENV.COM

OFFICE: 912.920.2895

FAX: 888.880.3520

P.O. Box 61237 Savannah, GA 31420

Via E-Mail

October 31, 2017

Mr. Nathaniel Panther, PE  
Chatham County Engineering Department  
124 Bull Street  
Savannah, Georgia 31401

RE: Final Asbestos Abatement Report  
Chatham County Jail  
Montgomery Street  
Savannah, Georgia  
Arrowood Project No. 2017-038

Dear Mr. Panther:

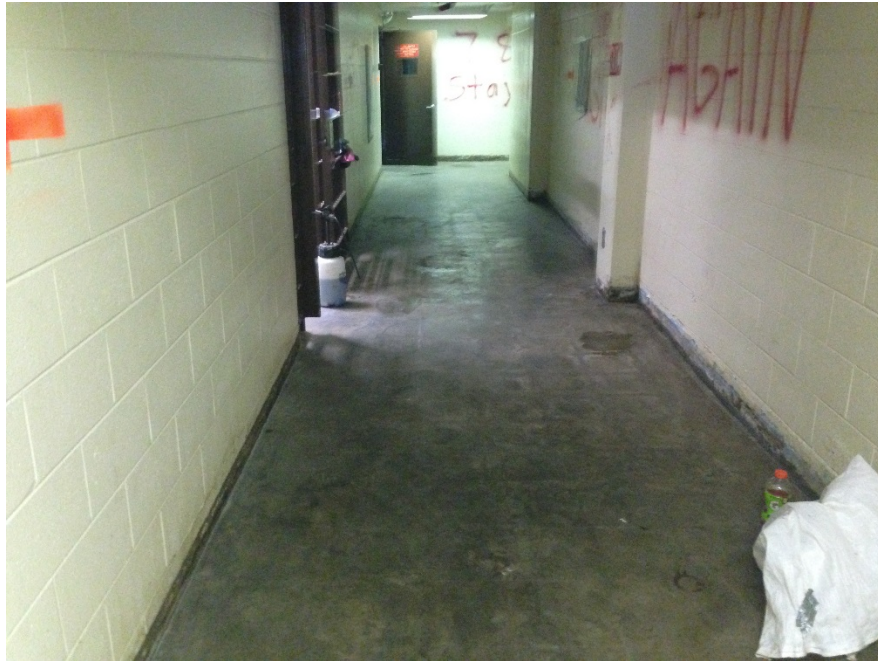
Arrowood Environmental Group (Arrowood) is pleased to provide you the final asbestos abatement report for the above referenced facility. Arrowood had previously identified VAT and mastic throughout the building and asbestos felt on the bottom roof layer. As such, the asbestos abatement contractor, (MaGoba Environmental, LLC-New Beach Construction Partners, Inc.), completed the tile and mastic removal throughout the building. As the floor tile and mastic were removed from each floor, Arrowood completed a visual clearance each floor before the abatement crew was allowed to move to the next floor. In addition to the tile and mastic, the abatement contractor also completed the removal of the roofing from the building. See the photographs below of the building interior and roof after abatement and clearance. The building is ready for demolition.

See Appendix I for the dump receipts for the asbestos waste disposal.











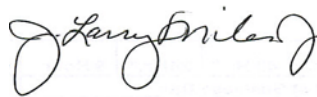




## **CLOSING**

Should you have any questions regarding the information contained in this report, please feel free to call Larry Miles at 912-507-5855. We appreciate this opportunity to provide these services to you and look forward to working with you again in the future.

Sincerely,



J. Larry Miles, Jr. MS, CSP

Attachments (1)



# Appendix I



Please print or type.

<b>NON HAZARDOUS WASTE MANIFEST</b>		1. Generator ID Number	2. Page 1 of	3. Emergency Response Phone	4. <b>WM -20012889</b>			
5. Generator's Name and Mailing Address <b>Former Clathra Co Jail</b> <b>145 Montgomery St</b> <b>South Ga</b>		Generator's Site Address (If different than mailing address)						
Generator's Phone:								
6. Transporter 1 Company Name <b>Waste Management of South</b>		U.S. EPA ID Number						
7. Transporter 2 Company Name		U.S. EPA ID Number						
8. Designated Facility Name and Site Address <b>Superior Landfill</b> <b>3001 Little Neck Rd</b> <b>South Ga 31419</b>		U.S. EPA ID Number						
Facility's Phone:								
9a. HM	9b. U.S. DOT Description (Including Proper Shipping Name, Hazard Class, ID Number, and Packing Group (if any))	10. Containers		11. Total Quantity	12. Unit Wt./Vol.	13. Waste No.		
		No.	Type					
1.	<b>non friable Asbestos 4065296A</b>							
2.								
3.								
4.								
14. Special Handling Instructions and Additional Information								
15. GENERATOR'S/OFFEROR'S CERTIFICATION: I hereby declare that the contents of this consignment are fully and accurately described above by the proper shipping name, and are classified, packaged, marked and labeled/placarded, and are in all respects in proper condition for transport according to applicable and national governmental regulations and is (are) not a hazardous waste as defined by 40 CFR Part 261 or any applicable state law.								
Generator's/Offoror's Printed/Typed Name				Signature		Month	Day	Year
Transporter Acknowledgement of Receipt of Materials								
16. Transporter 1 Printed/Typed Name <b>Berry McNeill</b>				Signature		Month	Day	Year
17. Transporter 2 Printed/Typed Name				Signature		Month	Day	Year
18. Discrepancy Comments								
<b>N320/600 W871W94 131</b>								
18a. Discrepancy Indication Space								
<input type="checkbox"/> Quantity <input type="checkbox"/> Type <input type="checkbox"/> Residue <input type="checkbox"/> Partial Rejection <input type="checkbox"/> Full Rejection								
19. Management Method Codes								
Manifest Reference Number:								
1.		2.		3.		4.		
20. Designated Facility Owner or Operator: Certification of receipt of materials covered by the manifest except as noted in Item 18a								
Printed/Typed Name <b>YB</b>				Signature <b>YB</b>		Month	Day	Year

GENERATOR

TRANSPORTER

DESIGNATED FACILITY

Please print or type.

<b>NON HAZARDOUS WASTE MANIFEST</b>		1. Generator ID Number		2. Page 1 of		3. Emergency Response Phone		4. <b>WM - 20012888</b>	
		5. Generator's Name and Mailing Address <b>Former Chatham County Jail 145 Montgomery St</b>		Generator's Site Address (If different than mailing address)					
Generator's Phone: <b>Savh</b>									
6. Transporter 1 Company Name <b>Waste Management of Savh</b>								U.S. EPA ID Number	
7. Transporter 2 Company Name								U.S. EPA ID Number	
8. Designated Facility Name and Site Address <b>Superior Landfill 3001 Little Neck Rd</b>								U.S. EPA ID Number	
Facility's Phone: <b>Savh Ga 31419</b>									
9a. HM	9b. U.S. DOT Description (Including Proper Shipping Name, Hazard Class, ID Number, and Packing Group (if any))	10. Containers		11. Total Quantity	12. Unit Wt./Vol.	13. Waste No.			
		No.	Type						
1.	<b>Asbestos non friable 406529 GA</b>			<b>30yrd</b>					
2.									
3.									
4.									
14. Special Handling Instructions and Additional Information  <b>N3201600W8116098 E1314T</b>									
15. GENERATOR'S/OFFEROR'S CERTIFICATION: I hereby declare that the contents of this consignment are fully and accurately described above by the proper shipping name, and are classified, packaged, marked and labeled/placarded, and are in all respects in proper condition for transport according to applicable and national governmental regulations and is (are) not a hazardous waste as defined by 40 CFR Part 261 or any applicable state law.									
Generator's/Offoror's Printed/Typed Name <b>McClair</b>				Signature <i>[Signature]</i>		Month <b>08</b>		Day <b>21</b>	
16. Transporter 1 Printed/Typed Name <b>Berry McMill</b>		Signature <i>[Signature]</i>				Month <b>08</b>		Day <b>21</b>	
17. Transporter 2 Printed/Typed Name		Signature				Month		Day <b>21</b>	
						Year <b>17</b>			
18. Discrepancy Comments									
18a. Discrepancy Indication Space <input type="checkbox"/> Quantity <input type="checkbox"/> Type <input type="checkbox"/> Residue <input type="checkbox"/> Partial Rejection <input type="checkbox"/> Full Rejection									
19. Management Method Codes									
1.		2.		3.		4.			
20. Designated Facility Owner or Operator: Certification of receipt of materials covered by the manifest except as noted in Item 18a									
Printed/Typed Name <b>TP</b>				Signature <i>[Signature]</i>		Month <b>08</b>		Day <b>21</b>	
						Year <b>17</b>			

GENERATOR

TRANSPORTER

DESIGNATED FACILITY





# NON-HAZARDOUS MANIFEST

<b>NON-HAZARDOUS MANIFEST</b>		1. Generator's US EPA ID No.		Manifest Doc No.		2. Page 1 of 1		02		
3. Generator's Mailing Address: FORMER CHATHAM COUNTY JAIL 145 MONTGOMERY STREET SAVANNAH, GA 31401 4. Generator's Phone 404-271-8239				Generator's Site Address (If different than mailing):		A. Manifest Number WMNA		«number»		
5. Transporter 1 Company Name				6. US EPA ID Number		B. State Generator's ID				
7. Transporter 2 Company Name				8. US EPA ID Number		C. State Transporter's ID				
9. Designated Facility Name and Site Address SUPERIOR LANDFILL 3001 LITTLE NECK ROAD SAVANNAH, GA 31419				10. US EPA ID Number		D. Transporter's Phone				
						E. State Transporter's ID				
						F. Transporter's Phone				
						G. State Facility ID				
						H. State Facility Phone 912-927-6113				
GENERATOR	11. Description of Waste Materials					12. Containers		13. Total Quantity	14. Unit Wt./Vol.	I. Misc. Comments
	a. ASBESTOS-NON-FRIABLE					No.	Type			
	WM Profile # 406529GA									
	b.									
	WM Profile #									
	c.									
WM Profile #										
d.										
WM Profile #										
J. Additional Descriptions for Materials Listed Above					K. Disposal Location					
					Cell	103261 600W 8116098				
					Grid	E13174				
15. Special Handling Instructions and Additional Information										
Purchase Order #					EMERGENCY CONTACT / PHONE NO.:					
16. GENERATOR'S CERTIFICATE: I hereby certify that the above-described materials are not hazardous wastes as defined by 40 CFR Part 261 or any applicable state law, have been fully and accurately described, classified and packaged and are in proper condition for transportation according to applicable regulations.										
Printed Name <u>John Magala</u>					Signature "On behalf of" <u>Magala</u>			Month	Day	Year
								7	16	17
TRANSPORTER	17. Transporter 1 Acknowledgement of Receipt of Materials									
	Printed Name <u>John J. Lee</u>			Signature <u>[Signature]</u>		Month	Day	Year		
18. Transporter 2 Acknowledgement of Receipt of Materials										
Printed Name			Signature		Month	Day	Year			
FACILITY	19. Certificate of Final Treatment/Disposal I certify, on behalf of the above listed treatment facility, that to the best of my knowledge, the above-described waste was managed in compliance with all applicable laws, regulations, permits and licenses on the dates listed above.									
	20. Facility Owner or Operator: Certification of receipt of non-hazardous materials covered by this manifest.									
	Printed Name <u>[Signature]</u>			Signature <u>[Signature]</u>			Month	Day	Year	
						7	16	17		

White- TREATMENT, STORAGE, DISPOSAL FACILITY COPY

Pink- FACILITY USE ONLY

Blue- GENERATOR #2 COPY

Gold- TRANSPORTER #1 COPY

Yellow- GENERATOR #1 COPY



# NON-HAZARDOUS MANIFEST

<b>NON-HAZARDOUS MANIFEST</b>		1. Generator's US EPA ID No.		Manifest Doc No.		2. Page 1 of 1			
3. Generator's Mailing Address: FORMER CHATHAM COUNTY JAIL 145 MONTGOMERY STREET SAVANNAH, GA 31401 4. Generator's Phone 404-271-8239		Generator's Site Address (If different than mailing):		A. Manifest Number <b>WMNA</b>		B. State Generator's ID <b>01</b> «number»			
5. Transporter 1 Company Name		6. US EPA ID Number		C. State Transporter's ID		D. Transporter's Phone			
7. Transporter 2 Company Name		8. US EPA ID Number		E. State Transporter's ID		F. Transporter's Phone			
9. Designated Facility Name and Site Address SUPERIOR LANDFILL 3001 LITTLE NECK ROAD SAVANNAH, GA 31419		10. US EPA ID Number		G. State Facility ID		H. State Facility Phone 912-927-6113			
GENERATOR	11. Description of Waste Materials			12. Containers		13. Total Quantity	14. Unit Wt./Vol.	I. Misc. Comments	
	a. ASBESTOS-NON-FRIABLE			No.	Type				
	WM Profile # 406529GA								
	b.								
	WM Profile #								
	c.								
WM Profile #									
d.									
WM Profile #									
J. Additional Descriptions for Materials Listed Above				K. Disposal Location					
				Cell	N3201600		Level	131	
				Grid	W816094				
15. Special Handling Instructions and Additional Information									
Purchase Order # _____ EMERGENCY CONTACT / PHONE NO.: _____									
16. GENERATOR'S CERTIFICATE: I hereby certify that the above-described materials are not hazardous wastes as defined by 40 CFR Part 261 or any applicable state law, have been fully and accurately described, classified and packaged and are in proper condition for transportation according to applicable regulations.									
Printed Name <i>John P. Green</i>			Signature "On behalf of"			Month 8	Day 16	Year 2017	
TRANSPORTER	17. Transporter 1 Acknowledgment of Receipt of Materials			Signature <i>John H. Steven</i>			Month 8	Day 16	Year 2017
	Printed Name <i>John H. Steven</i>			Signature			Month	Day	Year
	18. Transporter 2 Acknowledgment of Receipt of Materials			Signature			Month	Day	Year
FACILITY	19. Certificate of Final Treatment/Disposal I certify, on behalf of the above listed treatment facility, that to the best of my knowledge, the above-described waste was managed in compliance with all applicable laws, regulations, permits and licenses on the dates listed above.			Signature <i>[Signature]</i>			Month 08	Day 16	Year 2017
	20. Facility Owner or Operator: Certification of receipt of non-hazardous materials covered by this manifest.			Signature			Month	Day	Year
	Printed Name <i>[Signature]</i>			Signature			Month	Day	Year

White- TREATMENT, STORAGE, DISPOSAL FACILITY COPY

Pink- FACILITY USE ONLY

Blue- GENERATOR #2 COPY

Gold- TRANSPORTER #1 COPY

Yellow- GENERATOR #1 COPY





# NON-HAZARDOUS MANIFEST

<b>NON-HAZARDOUS MANIFEST</b>		1. Generator's US EPA ID No.		Manifest Doc No.		2. Page 1 of 1		01		
3. Generator's Mailing Address: FORMER CHATHAM COUNTY JAIL 145 MONTGOMERY STREET SAVANNAH, GA 31401 4. Generator's Phone 404-271-8239				Generator's Site Address (If different than mailing):				A. Manifest Number <b>WMNA</b> «number»		
5. Transporter 1 Company Name				6. US EPA ID Number				B. State Generator's ID		
7. Transporter 2 Company Name				8. US EPA ID Number				C. State Transporter's ID		
9. Designated Facility Name and Site Address SUPERIOR LANDFILL 3001 LITTLE NECK ROAD SAVANNAH, GA 31419				10. US EPA ID Number				D. Transporter's Phone		
								E. State Transporter's ID		
								F. Transporter's Phone		
								G. State Facility ID		
								H. State Facility Phone 912-927-6113		
GENERATOR	11. Description of Waste Materials				12. Containers		13. Total Quantity	14. Unit Wt./Vol.	I. Misc. Comments	
	a. ASBESTOS-NON-FRIABLE				No.	Type				
	WM Profile # 406529GA					30 <sup>2</sup>				
	b.									
	WM Profile #									
TRANSPORTER	c.									
	WM Profile #									
	d.									
	WM Profile #									
	J. Additional Descriptions or Materials Listed Above				K. Disposal Location					
FACILITY					Cell	N3201000			Level 131	
					Grid	W8716094				
	15. Special Handling Instructions and Additional Information									
	Purchase Order #				EMERGENCY CONTACT / PHONE NO.:					
	16. GENERATOR'S CERTIFICATE: I hereby certify that the above-described materials are not hazardous wastes as defined by 40 CFR Part 261 or any applicable state law, have been fully and accurately described, classified and packaged and are in proper condition for transportation according to applicable regulations.									
TRANSPORTER	Printed Name <i>MAGORAN</i>				Signature "On behalf of" <i>MAGORAN</i>			Month 7	Day 16	Year 17
	17. Transporter 1 Acknowledgement of Receipt of Materials									
	Printed Name <i>JOHN S-Even</i>				Signature <i>JOHN S-Even</i>			Month 8	Day 16	Year 17
	18. Transporter 2 Acknowledgement of Receipt of Materials									
	Printed Name				Signature			Month	Day	Year
FACILITY	19. Certificate of Final Treatment/Disposal I certify, on behalf of the above listed treatment facility, that to the best of my knowledge, the above-described waste was managed in compliance with all applicable laws, regulations, permits and licenses on the dates listed above.									
	20. Facility Owner or Operator: Certification of receipt of non-hazardous materials covered by this manifest.									
	Printed Name <i>YMS</i>				Signature <i>YMS</i>			Month 08	Day 16	Year 17

White- TREATMENT, STORAGE, DISPOSAL FACILITY COPY

Blue- GENERATOR #2 COPY

Yellow- GENERATOR #1 COPY

Pink- FACILITY USE ONLY

Gold- TRANSPORTER #1 COPY





## NON-HAZARDOUS WASTE MANIFEST

### GENERATOR

Generator Name MA GORR Environmental LLC / Atlantic Waste US EPA ID# \_\_\_\_\_

Billing Address 125B Pine Meadow Drive, Pooler, GA 31322

Site Address 145 Montgomery St Savannah, GA

Country of Origin USA Phone (912) 964-2000

Description of Waste	Total Quantity	Profile Number	Unit of Measure	Container Type
<u>Non Toxic Solvents</u>	<u>1</u>	<u>1037476A</u>	<u>30</u>	<u>RGC</u>

Special Handling Instructions

I hereby certify that the above described materials are non-hazardous wastes as defined by 40 CFR Part 281 or any applicable state law, have been fully and accurately described, classified and packaged and are in proper condition for transportation according to applicable regulations.

Generator Authorized Agent Name

Signature

Date Shipped

### TRANSPORTER

Transporter Name Atlantic Waste Services

DOT# \_\_\_\_\_

Address 125B Pine Meadow Drive, Pooler, GA 31322

Truck Number \_\_\_\_\_

Name of Authorized Agent

Signature

Date Delivered

### DISPOSAL FACILITY

Site Name Superior Landfill

Address 3001 Little Neck Road, Savannah, GA 31419

I hereby acknowledge receipt of the above described materials.

Name of Authorized Agent

Signature

Date Received





## NON-HAZARDOUS WASTE MANIFEST

### GENERATOR

Generator Name MAGORA Environmental LLC / Atlantic Waste US EPA ID# \_\_\_\_\_  
Billing Address 125B Pine Meadow Drive, Pooler, GA 31322  
Site Address 145 Montgomery St Savannah, GA  
Country of Origin USA Phone (912) 964-2000

Description of Waste	Total Quantity	Profile Number	Unit of Measure	Container Type
<u>NON FLAMMABLE WASTES</u>	<u>1</u>	<u>1874701</u>	<u>30</u>	<u>ROL</u>

Special Handling Instructions

I hereby certify that the above described materials are non-hazardous wastes as defined by 40 CFR Part 281 or any applicable state law, have been fully and accurately described, classified and packaged and are in proper condition for transportation according to applicable regulations.

Generator Authorized Agent Name

Signature

Date Shipped 1/25/11

### TRANSPORTER

Transporter Name Atlantic Waste Services DOT# \_\_\_\_\_  
Address 125B Pine Meadow Drive, Pooler, GA 31322 Truck Number \_\_\_\_\_  
Name of Authorized Agent \_\_\_\_\_ Signature \_\_\_\_\_ Date Delivered \_\_\_\_\_

### DISPOSAL FACILITY

Site Name Superior Landfill  
Address 3001 Little Neck Road, Savannah, GA 31419

I hereby acknowledge receipt of the above described materials.

Name of Authorized Agent

Signature

Date Received





## NON-HAZARDOUS WASTE MANIFEST

### GENERATOR

Generator Name MAGORA Environmental LLC / Atlantic Waste US EPA ID# \_\_\_\_\_

Billing Address 125B Pine Meadow Drive, Pooler, GA 31322

Site Address 145 Albany St Savannah, GA

Country of Origin USA Phone (912) 964-2000

Description of Waste	Total Quantity	Profile Number	Unit of Measure	Container Type
<u>Non-Hazardous Asbestos</u>	<u>1</u>	<u>1037476A</u>	<u>30</u>	<u>602</u>

Special Handling Instructions \_\_\_\_\_

I hereby certify that the above described materials are non-hazardous wastes as defined by 40 CFR Part 281 or any applicable state law, have been fully and accurately described, classified and packaged and are in proper condition for transportation according to applicable regulations.

MAGORA  
Generator Authorized Agent Name

[Signature]  
Signature

7-25-17  
Date Shipped

### TRANSPORTER

Transporter Name Atlantic Waste Services

DOT# \_\_\_\_\_

Address 125B Pine Meadow Drive, Pooler, GA 31322

Truck Number \_\_\_\_\_

\_\_\_\_\_  
Name of Authorized Agent

\_\_\_\_\_  
Signature

\_\_\_\_\_  
Date Delivered

### DISPOSAL FACILITY

Site Name Superior Landfill

Address 3001 Little Neck Road, Savannah, GA 31419

I hereby acknowledge receipt of the above described materials.

\_\_\_\_\_  
Name of Authorized Agent

\_\_\_\_\_  
Signature

\_\_\_\_\_  
Date Received





ARROWOODENV.COM

OFFICE: 912.920.2895

FAX: 888.880.3520

P.O. Box 61237 Savannah, GA 31420

Via E-Mail

May 11, 2017

Mr. Nathaniel Panther, PE  
Chatham County Engineering Department  
124 Bull Street  
Savannah, Georgia 31401

RE: Report of Asbestos Sampling  
Chatham County Jail  
Montgomery Street  
Savannah, Georgia  
Arrowood Project No. 2017-038

Dear Mr. Panther:

Arrowood Environmental Group (Arrowood) is pleased to provide you the results of the additional asbestos sampling conducted on April 20, 2017 at the above referenced project site. The purpose of this survey was to identify asbestos containing materials prior to the building's demolition. The sampling was conducted by Mr. J. Larry Miles, Jr., MS, CSP, an AHERA accredited asbestos inspector, Certificate No. 16220, The Environmental Institute, Asbestos Inspector Refresher Course, Expiration date of March 23, 2018. See Appendix II for a copy of Mr. Miles' certificate.

The structure was formerly used as a county jail. It is constructed of pre-stressed cast concrete with four floors plus a basement. The walls are primarily painted concrete masonry with plaster ceilings. There is a limited amount of acoustical drop ceiling in the first floor office area. There is 12-inch floor tile (white with brown specks) in the hallways of all floors. There are limited areas on the first floor where some original floor tile was replaced (12-inch green in the Mop room and gray in bath room) and some areas on the fourth floor with blue and white 12-inch floor tile. The office area and halls have black cove base.

There are mechanical rooms in the basement and third and fourth floors. All the piping is insulated with paper wrapped fiberglass insulation with plastic elbows. The insulation is similar in all three mechanical rooms. There are two hot water storage tanks in the mechanical room on the third floor that were insulated with a mud/cement insulation and wire mesh. There is an HVAC expansion joint on the HVAC unit in the third floor mechanical room.



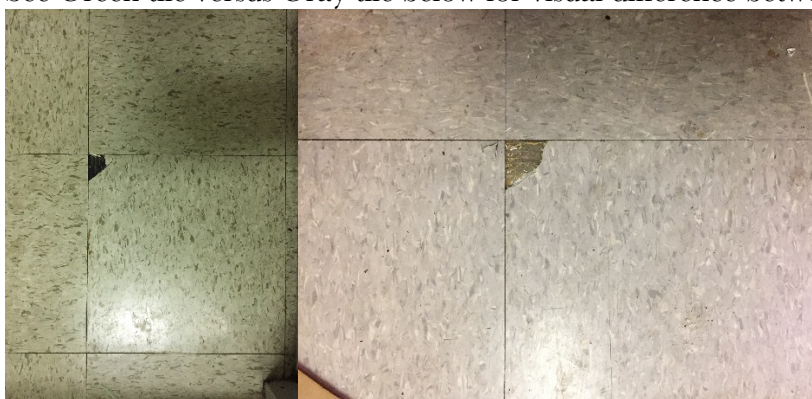
On the first floor there is a small amount of drywall/joint compound surrounding support columns in the administrative area.

The roof is a composition roof.

## EXECUTIVE SUMMARY OF FINDINGS

The following materials were found to contain asbestos:

- Mastic under 12-inch Floor tile, white with brown specs, all floors-including under white floor tile on first floor camera/booking area. This is the predominant floor tile throughout the building.
- Mastic under 12-inch Floor tile, Green, first and third floors (Mop room and breakroom). See Green tile versus Gray tile below for visual difference between the two.



- Roof (flashing is same materials as core). Asbestos is the bottom felt.

## SAMPLING ACTIVITIES

Arrowood's sampling included drywall, joint compound, 12-inch floor tiles with mastics, plaster, asphalt roofing, duct insulation, pipe insulation, tank insulation, and HVAC expansion joint.

The sampling locations and results are outlined in Table 1 below. See Appendix I for the complete analytical laboratory reports.

**Table 1: Summary of Asbestos Samples/Location**

Sample No.	Sample Description	Detected Asbestos? (Yes/No)	Regulated Asbestos (>1%)(Yes/No)	Cat 1 or 2 /RACM	Quantity
<b>1<sup>st</sup> Floor</b>					
CCJ-1	Ceiling tile		No		
CCJ-2	12-inch, white/BRN Floor tile	<b>Yes</b>	<b>Yes, only mastic</b>	<b>CAT 1</b>	<b>Apprx. 6,000 square feet</b>



CCJ-3	12-inch, Gray, Floor tile- Bathroom		No		
CCJ-4	Drywall/Joint Compound		No-all layers		
CCJ-5	Drywall/Joint Compound		No-all layers		
CCJ-6	Joint Compound		No		
CCJ-7	Hot water pipe insulation		No		
CCJ-8	Cove base and mastic		No		
CCJ-9	12-inch, Green Floor tile-Mop room	<b>Yes</b>	<b>Yes, only mastic</b>	<b>CAT 1</b>	<b>Apprx. 200 square feet</b>
CCJ-10	12-inch, Green Floor tile, breakroom	<b>Yes</b>	<b>Yes, only mastic</b>	<b>CAT 1</b>	
CCJ-11	12-inch, Gray, Floor tile		No		
CCJ-12	12-inch, white/BRN Floor tile	<b>Yes</b>	<b>Yes, only mastic</b>	<b>CAT 1</b>	
CCJ-13	Plaster		No		
CCJ-14	Plaster		No		
CCJ-38	Ceiling tile		No		
CCJ-39	Cove Base and mastic		No		
<b>2nd Floor</b>					
CCJ-15	Plaster		No		
CCJ-16	Plaster		No		
CCJ-17	12-inch, white/BRN Floor tile	<b>Yes</b>	<b>Yes, only mastic</b>	<b>CAT 1</b>	
CCJ-18	12-inch, white/BRN Floor tile	<b>Yes</b>	<b>Yes, only mastic</b>	<b>CAT 1</b>	
CCJ-19	Hot water pipe insulation		No		
<b>3rd Floor</b>					
CCJ-20	12-inch, white/BRN Floor tile	<b>Yes</b>	<b>Yes, only mastic</b>	<b>CAT 1</b>	



CCJ-21	12-inch, white/BRN Floor tile	<b>Yes</b>	<b>Yes, only</b>	<b>mastic</b>	<b>CAT 1</b>	
CCJ-22	Plaster		No			
CCJ-23	Plaster		No			
CCJ-24	HVAC Duct Insulation		No			
CCJ-25	HVAC Duct Insulation		No			
CCJ-26	HVAC Duct Insulation		No			
CCJ-27	Hot water return insulation		No			
CCJ-28	Hot water supply insulation		No			
CCJ-29	Hot water storage tank		No			
CCJ-30	Hot water storage tank		No			
CCJ-31	Hot water storage tank		No			
<b>4<sup>th</sup> Floor</b>						
CCJ-32	12-inch, white/BRN Floor tile	<b>Yes</b>	<b>Yes, only</b>	<b>mastic</b>	<b>CAT 1</b>	
CCJ-33	12-inch, white/BRN Floor tile	<b>Yes</b>	<b>Yes, only</b>	<b>mastic</b>	<b>CAT 1</b>	
CCJ-34	12-inch, white Floor tile		No			
CCJ-35	12-inch, Blue Floor tile		No			
CCJ-36	HVAC Expansion joint		No			
CCJ-37	HVAC Expansion joint		No			
<b>Roof</b>						
CCJ-40	Roof core	<b>Yes</b>	<b>Yes-Felt layer</b>	<b>CAT 1</b>	<b>Apprx. 190,000 square feet</b>	
CCJ-41	Roof core	<b>Yes</b>	<b>Yes-Felt layer</b>	<b>CAT 1</b>		
CCJ-42	Roof core	<b>Yes</b>	<b>Yes-Felt layer</b>	<b>CAT 1</b>		



## FINDINGS / RECOMMENDATIONS

The following materials were found to contain asbestos:

- Mastic under 12-inch Floor tile, white with brown specs, all floors-including under white floor tile on first floor camera/booking area
- Mastic under 12-inch Floor tile, Green, first and third floors (Mop room and breakroom)
- Roof (flashing is same materials as core). Asbestos is the bottom felt.

These materials must be abated prior to the demolition of the building.

**Under NESHAP regulations, a notification must be provided to Georgia EPD, Asbestos Management Branch a ten working day notification in the event of a planned demolition of a structure support member and/or an asbestos abatement. The notifications may be made concurrently on the same form. See Appendix III for the form.**

**If additional materials are encountered during demolition activities that may be suspected as asbestos containing, all work should cease and the materials should be either tested or assumed to be positive and handled accordingly.**

## CLOSING

Should you have any questions regarding the information contained in this report, please feel free to call Larry Miles at 912-507-5855. We appreciate this opportunity to provide these services to you and look forward to working with you again in the future.

Sincerely,

A handwritten signature in black ink, appearing to read "J. Larry Miles, Jr.", written in a cursive style.

J. Larry Miles, Jr. MS, CSP

Attachments (3)



# Appendix I



Environmental Hazards Services, L.L.C.

7469 Whitepine Rd

Richmond, VA 23237

Telephone: 800.347.4010

## Asbestos Bulk Analysis Report

Report Number: 17-04-03822

Client: Arrowood Environmental Group, Inc.  
P.O. Box 61237  
Savannah, GA 31420

Received Date: 04/28/2017  
Analyzed Date: 04/30/2017, 05/01/2017  
Reported Date: 05/02/2017

Project/Test Address: Chatham County Jail; Savannah, GA

Client Number:

201388

Fax Number:

888-880-3520

# Laboratory Results

Lab Sample Number	Client Sample Number	Layer Type	Lab Gross Description	Asbestos	Other Materials
17-04-03822-001	CCJ-1		Beige Fibrous; White Powder; Inhomogeneous	NAD	65% Cellulose 35% Non-Fibrous
17-04-03822-002A	CCJ-2	Tile	Light Brown Vinyl; Homogeneous	NAD	100% Non-Fibrous
17-04-03822-002B	CCJ-2	Mastic	Black Tar-Like; Homogeneous	6% Chrysotile	94% Non-Fibrous
Total Asbestos: 6%					
17-04-03822-003A	CCJ-3	Tile	Gray Vinyl; Homogeneous	NAD	100% Non-Fibrous
17-04-03822-003B	CCJ-3	Mastic	Tan Adhesive; Homogeneous	NAD	1% Cellulose 99% Non-Fibrous

# Environmental Hazards Services, L.L.C

Client Number: 201388

Report Number: 17-04-03822

Project/Test Address: Chatham County Jail; Savannah, GA

Lab Sample Number	Client Sample Number	Layer Type	Lab Gross Description	Asbestos	Other Materials
17-04-03822-004A	CCJ-4	Drywall	White Powder; Tan Fibrous; Inhomogeneous	NAD	18% Cellulose 82% Non-Fibrous
17-04-03822-004B	CCJ-4	Joint Comp.	White Granular; Gray Paint-Like; Inhomogeneous	NAD	100% Non-Fibrous
17-04-03822-004C	CCJ-4	Composite	White Granular; Powder; Tan Fibrous; Gray Paint-Like; Inhomogeneous	NAD	16% Cellulose 84% Non-Fibrous
17-04-03822-005A	CCJ-5	Drywall	White Powder; Tan Fibrous; Inhomogeneous	NAD	18% Cellulose 82% Non-Fibrous
17-04-03822-005B	CCJ-5	Joint Comp.	White Granular; Gray Paint-Like; Inhomogeneous	NAD	100% Non-Fibrous
17-04-03822-005C	CCJ-5	Composite	White Granular; Powder; Tan Fibrous; Gray Paint-Like; Inhomogeneous	NAD	16% Cellulose 84% Non-Fibrous
17-04-03822-006	CCJ-6		White Granular; Gray Paint-Like; Inhomogeneous	NAD	100% Non-Fibrous



# Environmental Hazards Services, L.L.C

Client Number: 201388

Report Number: 17-04-03822

Project/Test Address: Chatham County Jail; Savannah, GA

Lab Sample Number	Client Sample Number	Layer Type	Lab Gross Description	Asbestos	Other Materials
17-04-03822-007	CCJ-7		Off-White Brittle; White/Yellow Fibrous; Silver Foil; Inhomogeneous	NAD	15% Cellulose 40% Fibrous Glass 45% Non-Fibrous
17-04-03822-008A	CCJ-8	Cove Base	Black Vinyl; Homogeneous	NAD	100% Non-Fibrous
17-04-03822-008B	CCJ-8	Mastic	Tan Adhesive; Homogeneous	NAD	1% Cellulose 99% Non-Fibrous
17-04-03822-009A	CCJ-9	Tile	Light Green Vinyl; Homogeneous	NAD	100% Non-Fibrous
17-04-03822-009B	CCJ-9	Mastic	Black Tar-Like; Homogeneous	6% Chrysotile	94% Non-Fibrous
Total Asbestos: 6%					
17-04-03822-010A	CCJ-10	Tile	Light Green Vinyl; Homogeneous	NAD	100% Non-Fibrous
17-04-03822-010B	CCJ-10	Mastic	Black Tar-Like; Homogeneous	7% Chrysotile	93% Non-Fibrous
Total Asbestos: 7%					
17-04-03822-011A	CCJ-11	Tile	Gray Vinyl; Homogeneous	NAD	100% Non-Fibrous

# Environmental Hazards Services, L.L.C

Client Number: 201388

Report Number: 17-04-03822

Project/Test Address: Chatham County Jail; Savannah, GA

Lab Sample Number	Client Sample Number	Layer Type	Lab Gross Description	Asbestos	Other Materials
17-04-03822-011B	CCJ-11	Mastic	Tan Adhesive; Homogeneous	NAD	1% Cellulose 99% Non-Fibrous
17-04-03822-012A	CCJ-12	Tile	Light Brown Vinyl; Homogeneous	NAD	2% Synthetic 98% Non-Fibrous
17-04-03822-012B	CCJ-12	Mastic	Black Tar-Like; Homogeneous	6% Chrysotile	94% Non-Fibrous
Total Asbestos: 6%					
17-04-03822-013	CCJ-13		Gray Granular; Cream Paint-Like; Inhomogeneous	NAD	100% Non-Fibrous
17-04-03822-014	CCJ-14		Gray Granular; Cream Paint-Like; Inhomogeneous	NAD	100% Non-Fibrous
17-04-03822-015	CCJ-15		Gray Granular; White Paint-Like; Inhomogeneous	NAD	100% Non-Fibrous
17-04-03822-016	CCJ-16		Gray Granular; White Paint-Like; Inhomogeneous	NAD	100% Non-Fibrous
17-04-03822-017A	CCJ-17	Tile	Light Brown Vinyl; Homogeneous	NAD	2% Synthetic 98% Non-Fibrous

# Environmental Hazards Services, L.L.C

Client Number: 201388

Report Number: 17-04-03822

Project/Test Address: Chatham County Jail; Savannah, GA

Lab Sample Number	Client Sample Number	Layer Type	Lab Gross Description	Asbestos	Other Materials
17-04-03822-017B	CCJ-17	Mastic	Black Tar-Like; Homogeneous	4% Chrysotile	1% Cellulose 95% Non-Fibrous
Total Asbestos:				4%	
17-04-03822-018A	CCJ-18	Tile	Light Brown Vinyl; Homogeneous	NAD	2% Synthetic 98% Non-Fibrous
17-04-03822-018B	CCJ-18	Mastic	Black Tar-Like; Homogeneous	5% Chrysotile	95% Non-Fibrous
Total Asbestos:				5%	
17-04-03822-019	CCJ-19		Off-White/Yellow Fibrous; Silver Foil; Inhomogeneous	NAD	20% Cellulose 55% Fibrous Glass 25% Non-Fibrous
17-04-03822-020A	CCJ-20	Tile	Light Brown Vinyl; Homogeneous	NAD	2% Synthetic 98% Non-Fibrous
17-04-03822-020B	CCJ-20	Mastic	Black Tar-Like; Homogeneous	5% Chrysotile	95% Non-Fibrous
Total Asbestos:				5%	
17-04-03822-021A	CCJ-21	Tile	Light Brown Vinyl; Homogeneous	NAD	2% Synthetic 98% Non-Fibrous
17-04-03822-021B	CCJ-21	Mastic	Black Tar-Like; Homogeneous	4% Chrysotile	1% Cellulose 95% Non-Fibrous
Total Asbestos:				4%	

# Environmental Hazards Services, L.L.C

Client Number: 201388

Report Number: 17-04-03822

Project/Test Address: Chatham County Jail; Savannah, GA

Lab Sample Number	Client Sample Number	Layer Type	Lab Gross Description	Asbestos	Other Materials
17-04-03822-022	CCJ-22		Gray Granular; Cream Paint-Like; Inhomogeneous	NAD	100% Non-Fibrous
17-04-03822-023	CCJ-23		Gray Granular; Cream Paint-Like; Inhomogeneous	NAD	100% Non-Fibrous
17-04-03822-024	CCJ-24		Off-White/Yellow Fibrous; Silver Foil; Inhomogeneous	NAD	20% Cellulose 55% Fibrous Glass 25% Non-Fibrous
17-04-03822-025	CCJ-25		Off-White/Yellow Fibrous; Silver Foil; Inhomogeneous	NAD	20% Cellulose 55% Fibrous Glass 25% Non-Fibrous
17-04-03822-026	CCJ-26		Off-White/Yellow Fibrous; Silver Foil; Inhomogeneous	NAD	20% Cellulose 55% Fibrous Glass 25% Non-Fibrous
17-04-03822-027	CCJ-27		Off-White/Yellow Fibrous; Silver Foil; White Adhesive; Inhomogeneous	NAD	20% Cellulose 50% Fibrous Glass 30% Non-Fibrous
17-04-03822-028	CCJ-28		White Rubbery; White/Yellow Fibrous; Inhomogeneous	NAD	18% Cellulose 50% Fibrous Glass 32% Non-Fibrous

# Environmental Hazards Services, L.L.C

Client Number: 201388

Report Number: 17-04-03822

Project/Test Address: Chatham County Jail; Savannah, GA

Lab Sample Number	Client Sample Number	Layer Type	Lab Gross Description	Asbestos	Other Materials
17-04-03822-029	CCJ-29		White/Gray Powder; Fibrous; Tan Fibrous; Inhomogeneous	NAD	25% Cellulose 20% Fibrous Glass 4% Synthetic 51% Non-Fibrous
17-04-03822-030	CCJ-30		White/Gray Powder; Fibrous; Tan Fibrous; Inhomogeneous	NAD	15% Cellulose 25% Fibrous Glass 8% Synthetic 52% Non-Fibrous
17-04-03822-031	CCJ-31		White/Gray Powder; Fibrous; Tan Fibrous; Inhomogeneous	NAD	15% Cellulose 25% Fibrous Glass 8% Synthetic 52% Non-Fibrous
17-04-03822-032A	CCJ-32	Tile	Light Brown Vinyl; Homogeneous	NAD	2% Synthetic 98% Non-Fibrous
17-04-03822-032B	CCJ-32	Mastic	Black Tar-Like; Homogeneous	3% Chrysotile	1% Cellulose 96% Non-Fibrous
				Total Asbestos: 3%	
17-04-03822-033A	CCJ-33	Tile	Light Brown Vinyl; Homogeneous	NAD	2% Synthetic 98% Non-Fibrous
17-04-03822-033B	CCJ-33	Mastic	Black Tar-Like; Homogeneous	4% Chrysotile	1% Cellulose 95% Non-Fibrous
				Total Asbestos: 4%	

# Environmental Hazards Services, L.L.C

Client Number: 201388

Report Number: 17-04-03822

Project/Test Address: Chatham County Jail; Savannah, GA

Lab Sample Number	Client Sample Number	Layer Type	Lab Gross Description	Asbestos	Other Materials
17-04-03822-034A	CCJ-34	Tile	Off-White Vinyl; Homogeneous	NAD	100% Non-Fibrous
17-04-03822-034B	CCJ-34	Mastic	Tan Adhesive; Homogeneous	NAD	1% Cellulose 99% Non-Fibrous
17-04-03822-035A	CCJ-35	Tile	Gray Vinyl; Homogeneous	NAD	100% Non-Fibrous
17-04-03822-035B	CCJ-35	Mastic	Tan Adhesive; Homogeneous	NAD	1% Cellulose 99% Non-Fibrous
17-04-03822-036	CCJ-36		Black Rubbery; Gray Fibrous; Inhomogeneous	NAD	30% Fibrous Glass 70% Non-Fibrous
17-04-03822-037	CCJ-37		Black Rubbery; Gray Fibrous; Inhomogeneous	NAD	30% Fibrous Glass 70% Non-Fibrous
17-04-03822-038	CCJ-38		Beige Fibrous; White Powder; Inhomogeneous	NAD	65% Cellulose 35% Non-Fibrous
17-04-03822-039A	CCJ-39	Cove Base	Black Vinyl; Homogeneous	NAD	100% Non-Fibrous

# Environmental Hazards Services, L.L.C

Client Number: 201388

Report Number: 17-04-03822

Project/Test Address: Chatham County Jail; Savannah, GA

Lab Sample Number	Client Sample Number	Layer Type	Lab Gross Description	Asbestos	Other Materials
17-04-03822-039B	CCJ-39	Mastic	Tan Adhesive; Homogeneous	NAD	1% Cellulose 99% Non-Fibrous
17-04-03822-040	CCJ-40		Black Tar-Like; Fibrous; Gray Rubbery; Yellow Foam; Inhomogeneous	10% Chrysotile	20% Cellulose 70% Non-Fibrous
				Total Asbestos: 10%	
Chrysotile present in felt layers. This material alone contains 25% Chrysotile.					
17-04-03822-041	CCJ-41		Black Tar-Like; Fibrous; Yellow Foam; Inhomogeneous	10% Chrysotile	20% Cellulose 70% Non-Fibrous
				Total Asbestos: 10%	
Chrysotile present in felt layers. This material alone contains 25% Chrysotile.					
17-04-03822-042	CCJ-42		Black Tar-Like; Fibrous; Yellow Foam; Gray Rubbery; Inhomogeneous	10% Chrysotile	20% Cellulose 70% Non-Fibrous
				Total Asbestos: 10%	
Chrysotile present in felt layers. This material alone contains 25% Chrysotile.					

## Environmental Hazards Services, L.L.C

Client Number: 201388

Report Number: 17-04-03822

Project/Test Address: Chatham County Jail; Savannah, GA

Lab Sample Number	Client Sample Number	Layer Type	Lab Gross Description	Asbestos	Other Materials
-------------------	----------------------	------------	-----------------------	----------	-----------------

QC Sample: 87-M12011-3, 83-M22010-3

QC Blank: SRM 1866 Fiberglass

Reporting Limit: 1% Asbestos

Method: EPA Method 600/R-93/116, EPA Method 600/M4-82-020

Analyst: Vickie Holmes

Reviewed By Authorized Signatory:

*Melissa Kanode*

Missy Kanode  
QA/QC Clerk

The condition of the samples analyzed was acceptable upon receipt per laboratory protocol unless otherwise noted on this report. Each distinct component in an inhomogeneous sample was analyzed separately and reported as a composite. Results represent the analysis of samples submitted by the client. Sample location, description, area, volume, etc., was provided by the client. This report cannot be used by the client to claim product endorsement by NVLAP or any agency of the U.S. Government. This report shall not be reproduced except in full, without the written consent of the Environmental Hazards Service, L.L.C. California Certification #2319 NY ELAP #11714 NVLAP #101882-0 VELAP 460172. All information concerning sampling location, date, and time can be found on Chain-of-Custody. Environmental Hazards Services, L.L.C. does not perform any sample collection.

Environmental Hazards Services, L.L.C. recommends reanalysis by point count (for more accurate quantification) or Transmission Electron Microscopy (TEM), (for enhanced detection capabilities) for materials regulated by EPA NESHAP (National Emission Standards for Hazardous Air Pollutants) and found to contain less than ten percent (<10%) asbestos by polarized light microscopy (PLM). Both services are available for an additional fee.

400 Point Count Analysis, where noted, performed per EPA Method 600/R-93/116 with a Reporting Limit of 0.25%.

\* All California samples analyzed by Polarized Light Microscopy, EPA Method 600/M4-82-020, Dec. 1982.

LEGEND: NAD = no asbestos detected





W2 PM

# Asbestos Chain-of-Custody Form

SHIP TO: 7469 Whitepine Rd. Richmond, VA 23237

Phone: (800) 347-4010 FAX: (804) 275-4907

ONLINE CLIENT PORTAL AVAILABLE FOR ANALYSIS RESULTS AT:

www.leadlab.com



17-04-03822

Due Date:

05/02/2017

(Tuesday)

AE

Environmental Hazards Services, LLC

Company Name: Arrowwood Environmental Group, Inc.

Account Number: 201388

Address: PO Box 61237

City/State/Zip: Savannah, GA 31420

Phone #: 912.507.5855

Email: lmiles@arrowwoodenv.com

Fax: 888.880.3520

Project Name / Testing Address: Chatham County Jail

City/State (Required): Savannah, GA

Collected by: L Miles

P.O. #

TURN AROUND TIMES: IF NO TAT IS SPECIFIED, SAMPLE(S) WILL BE PROCESSED AND CHARGED AS 3 - DAY TAT.

No.	Client Sample ID	HA Area #	Collection		PLM	PLM Point Count 400	PLM Point Count 1000	PLM NY Protocol	TEM - Bulk	Comments
			Date	Time						
1	CCJ-1		4/20	AM/PM	✓					ceiling tile
2	CCJ-2		4/20	AM/PM	✓					12-FT brown specs
3	CCJ-3		4/20	AM/PM	✓					12-FT gray specs
4	CCJ-4		4/20	AM/PM	✓					DW/JC composite as 3rd layer
5	CCJ-5		4/20	AM/PM	✓					DW/JC composite as 3rd layer
6	CCJ-6		4/20	AM/PM	✓					Joint Compound
7	CCJ-7		4/20	AM/PM	✓					H/W pipe insulation
8	CCJ-8		4/20	AM/PM	✓					Cove mold
9	CCJ-9		4/20	AM/PM	✓					12-FT Green spec
10	CCJ-10		4/20	AM/PM	✓					12-FT green spec

Released by: L Miles

Received by: *T. Moha*

Signature: *[Signature]*

Signature: *[Signature]*

Date/Time: 4/27/17

Date/Time: 4/28/17



# Asbestos Chain-of-Custody Form

## Additional Page(s)

Company Name: \_\_\_\_\_

Project: \_\_\_\_\_

Page 2 of       

LAB USE ONLY: EHS Order Number \_\_\_\_\_

382

Lab No.	Client Sample ID	HA Area #	Collection Date	Time	PLM	PLM Point Count 400	PLM Point Count 1000	PLM NY Protocol	TEM - Bulk	Comments
	CCJ-11		4/20	AM / PM	✓					12-FT gray spec
	CCJ-12		4/20	AM / PM	✓					12-FT, Brown spec
	CCJ-13		4/20	AM / PM	✓					Plaster
	CCJ-14		4/20	AM / PM	✓					Plaster
	CCJ-15		4/20	AM / PM	✓					Plaster
	CCJ-16		4/20	AM / PM	✓					Plaster
	CCJ-17		4/20	AM / PM	✓					12-FT brown spec
	CCJ-18		4/20	AM / PM	✓					12-FT brown spec
	CCJ-19		4/20	AM / PM	✓					H/W pipe insulation
	CCJ-20		4/20	AM / PM	✓					12-FT, brown spec
	CCJ-21		4/20	AM / PM	✓					12-FT, brown spec
	CCJ-22		4/20	AM / PM	✓					Plaster
	CCJ-23		4/20	AM / PM	✓					Plaster
	CCJ-24		4/20	AM / PM	✓					HVAC duct insulation
	CCJ-25		4/20	AM / PM	✓					HVAC duct insulation
	CCJ-26		4/20	AM / PM	✓					HVAC duct insulation
	CCJ-27		4/20	AM / PM	✓					H/W return insulation
	CCJ-28		4/20	AM / PM	✓					H/W supply insulation
	CCJ-29		4/20	AM / PM	✓					H/W storage tank insulation
	CCJ-30		4/20	AM / PM	✓					H/W storage tank insulation

Released by: L. Miles

Received by: *[Signature]*

Signature: *[Signature]*

Date/Time: 4/27/17

Date/Time: 4/28/17 11:46



**EHS Laboratories™**

Environmental Hazards Services, LLC

## Asbestos Chain-of-Custody Form

SHIP TO: 7469 Whitepine Rd. Richmond, VA 23237

Phone: (800) 347-4010 FAX: (804) 275-4907

ONLINE CLIENT PORTAL AVAILABLE FOR ANALYSIS RESULTS AT:

[www.leadlab.com](http://www.leadlab.com)

~ For Lab Use Only ~

Company Name: Arrowwood Environmental Group, Inc.

Account Number: 201388

Address: PO Box 61237

City/State/Zip:

Savannah, GA 31420

Phone #: 912.507.5855

Email: [lmiles@arrowwoodenv.com](mailto:lmiles@arrowwoodenv.com)

Fax: 888.880.3520

Project Name / Testing Address: Chatham County Jail

City/State (Required):

Savannah, GA

Collected by: L Miles

P.O. #

TURN AROUND TIMES: IF NO TAT IS SPECIFIED, SAMPLE(S) WILL BE PROCESSED AND CHARGED AS 3 - DAY TAT.

No.	Client Sample ID	HA Area #	Collection		PLM	PLM Point Count 400	PLM Point Count 1000	PLM NY Protocol	TEM - Bulk	Comments
			Date	Time						
1	CCJ-31		4/20	AM / PM	✓					HW Storage tank insulation
2	CCJ-32		4/20	AM / PM	✓					12-FT brown spec
3	CCJ-33		4/20	AM / PM	✓					12-FT brown spec
4	CCJ-34		4/20	AM / PM	✓					12-FT, white
5	CCJ-35		4/20	AM / PM	✓					12-FT, blue
6	CCJ-36		4/20	AM / PM	✓					HVAC expansion joint
7	CCJ-37		4/20	AM / PM	✓					HVAC expansion joint
8	CCJ-38		4/20	AM / PM	✓					ceiling tile
9	CCJ-39		4/20	AM / PM	✓					cove mold
10	CCJ-40		4/20	AM / PM	✓					roof

Released by: L Miles	Signature: <i>[Signature]</i>	Date/Time: 4/27/17
Received by: <i>[Signature]</i>	Signature: <i>[Signature]</i>	Date/Time: 4/28/17 11:44



**LAB USE ONLY:**      EHS Order Number

Page 4 of 4

**Project:**

LAB USE ONLY: EHS Order Number

382

[illegible]

Released by: L Miles  
Received by:

Tab

Signature: \_\_\_\_\_  
Signature: \_\_\_\_\_

Handwritten signature/initials.

Date/Time: 4/27/17  
Date/Time: 4/27/17

2/28/77



# Appendix II

---

# ***The Environmental Institute***

---

---

## ***James Miles***

---

Social Security Number - XXX-XX-8129

Arrowood Environmental Group - P. O. Box 61237 - Savannah, Georgia 31420

*Has completed coursework and satisfactorily passed  
an examination that meets all criteria required for  
EPA/AHERA/ASHARA (TSCA Title II) Approved Reaccreditation*

### ***Asbestos in Buildings: Inspector & Management Planner Refresher***

***March 24, 2017***

Course Date

***16220***

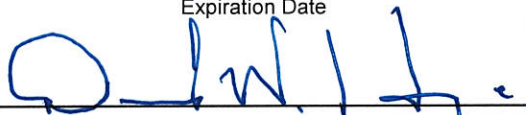
Certificate Number

***March 24, 2017***

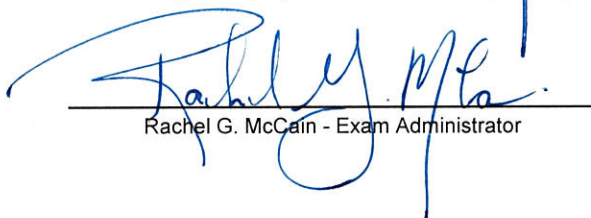
Examination Date

***March 23, 2018***

Expiration Date



David W. Hogue - Principal Instructor / Training Manager



Rachel G. McCain - Exam Administrator



(Approved by the ABIH Certification Maintenance Committee for 1 CM point - Approval #11-583)

(Florida Provider Registration #FL49-0001342 - Inspector Ref. Course #0002805 - Mgmt. Plan Ref. Course #0002806)

TEI - 1841 West Oak Parkway, Suite F - Marietta, Georgia 30062 - (770) 427-3600 - [www.tei-atl.com](http://www.tei-atl.com)

---

# *The Environmental Institute*

---

## *James L. Miles Jr.*

---

Social Security Number - XXX-XX-8129

Arrowood Environmental Group, Inc. - P. O. Box 61237 - Savannah, Georgia 31420

*Has completed coursework and satisfactorily passed  
an examination that meets the criteria required for  
EPA/AHERA/ASHARA (TSCA Title II) Approved Reaccreditation  
and NESHAP Regulations Training*

### *Asbestos in Buildings: Project Designer Refresher*

*March 15, 2017*

---

Course Date

*4202*

---

Certificate Number

*March 15, 2017*

---

Examination Date

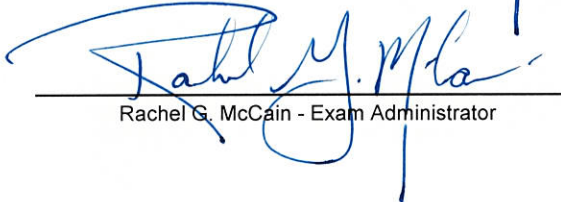
*March 14, 2018*

---

Expiration Date



David W. Hogue - Principal Instructor / Training Manager



Rachel G. McCain - Exam Administrator



(Approved by the ABIH Certification Maintenance Committee for 1 CM point - Approval #11-583)

(Florida Provider Registration Number FL49-0001342 - Course #FL49-0002808)

TEI - 1841 West Oak Parkway, Suite F - Marietta, GA 30062 - (770) 427-3600 - [www.tei-atl.com](http://www.tei-atl.com)



# **Appendix III**



**GEORGIA PROJECT NOTIFICATION FORM FOR ASBESTOS RENOVATION, ENCAPSULATION, OR DEMOLITION**

**ARE YOU SUBMITTING AN ADVANCE NOTIFICATION?** EPD **STRONGLY DISCOURAGES** SUBMITTAL OF ADVANCE NOTIFICATIONS, BUT IF IT IS ENTIRELY UNAVOIDABLE, CHECK (☑) THE BOX BELOW AND FAX THE **FIRST PAGE ONLY** OF THIS FORM TO (404) 362-2563. WHEN SUBMITTING AN ADVANCE NOTIFICATION, YOU ARE STILL REQUIRED TO COMPLETE THIS FORM IN ITS ENTIRETY AND SUBMIT IT **VIA MAIL** TO THE ADDRESS PROVIDED. **EPD NO LONGER ACCEPTS 'FAX ONLY' DOCUMENTS!!**

PLEASE ACCEPT THIS FORM AS ADVANCE NOTIFICATION OF THE PROJECT DESCRIBED BELOW: ☐

PERSON SUBMITTING ADVANCE NOTIFICATION: \_\_\_\_\_ CONTACT PHONE: \_\_\_\_\_

FAILURE TO SUBMIT ACCURATE AND COMPLETE FORMS WITHIN THE REQUIRED TIME FRAME AND AS INSTRUCTED MAY RESULT IN ENFORCEMENT ACTIVITY BY EPD! INCOMPLETE OR INACCURATE FORMS WILL BE REJECTED AND RETURNED. USE AN ATTACHMENT TO PROVIDE ADDITIONAL INFORMATION FOR ANY SECTION WHEN NEEDED TO PROVIDE COMPLETE DETAILS.

**DO NOT LEAVE ANY SECTION BLANK – INSERT UNKNOWN OR N/A IF NEEDED!**

**FOR PROJECTS WHERE FEES ARE DUE:**

EPD ASBESTOS FEES LOCKBOX

POST OFFICE BOX 101173

ATLANTA, GEORGIA 30392

(SEE SECTION 6 FOR FEE CALCULATION INSTRUCTIONS)

**FOR PROJECTS WHERE FEES ARE NOT DUE:**

EPD ASBESTOS PROGRAM

ATTN: ASBESTOS NOTIFICATIONS

4244 INTERNATIONAL PARKWAY, SUITE 104

ATLANTA, GEORGIA 30334

**SECTION 1A - TYPE OF NOTICE (USE THE APPROPRIATE CHECKBOX TO INDICATE THE TYPE OF NOTICE YOU ARE SUBMITTING)**☒ ORIGINAL INITIAL☐ ANNUAL BLANKET (\$1,000.00 FEE DUE NOW)☐ CANCELLATION☐ REVISION (IF REVISION, REVISION # \_\_\_\_\_)

REVISION NOTE: CHECK THE REVISION BOX IN THE SECTION BEING REVISED  
AND INSERT THE CORRECTED INFORMATION WHERE APPROPRIATE

**SECTION 1B - TYPE OF PROJECT****CHECK IF SECTION IS BEING REVISED FROM A PREVIOUS SUBMITTAL ☐**☐ RENOVATION/ABATEMENT **ONLY**  
☐ DEMOLITION ONLY☒ RENOVATION/ABATEMENT **PRIOR TO** DEMOLITION  
☐ JOINT DEMOLITION/RENOVATION☐ ENCAPSULATION  
☐ ORDERED DEMOLITION☐ EMERGENCY (SEE ASBESTOS RULES FOR DEFINITION OF EMERGENCY)☐ COURTESY (FOR NON-FRIABLE PROJECTS OR UNDER TRIGGER  
QUANTITY PROJECTS **ONLY!!!**)**SECTION 2 – SITE INFORMATION****CHECK IF SECTION IS BEING REVISED FROM A PREVIOUS SUBMITTAL ☐**

PROJECT NAME: Old Chatham County Jail

PROJECT ADDRESS: Montgomery Street and Oglethorpe Ave.

PROJECT CITY: Savannah

ZIP: 31401

COUNTY: Chatham

NEAREST MAJOR INTERSECTION: Montgomery and Oglethorpe

BLDG SIZE IN SQ. FT.: 190,000

AGE OF BUILDING IN YEARS: 40

NUMBER OF FLOORS IN BUILDING: 4

SPECIFIC LOCATION IN BUILDING OF ASBESTOS BEING REMOVED:

**SECTION 3A – ABATEMENT CONTRACTOR****CHECK IF SECTION IS BEING REVISED FROM A PREVIOUS SUBMITTAL ☐**

ASBESTOS REMOVAL CONTRACTOR:

CONTRACTOR STREET ADDRESS:

COMPANY CERTIFICATE #:

CITY:

STATE:

ZIP:

PHONE:

FAX:

LICENSED AGENT:

AGENT'S ID:

EXPIRES:

CELL PHONE:

**3b Other Contractor****CHECK IF SECTION IS BEING REVISED FROM A PREVIOUS SUBMITTAL ☐**

GENERAL/SUB/DEMOLITION CONTRACTOR:

JOB CONTRACTED:

OTHER CONTRACTOR STREET ADDRESS:

CITY:

STATE:

ZIP:

PHONE:

FAX:

**SECTION 4 – ACM INFORMATION****CHECK IF SECTION IS BEING REVISED FROM A PREVIOUS SUBMITTAL ☐**IS ASBESTOS PRESENT? ☒ YES ☐ NO ☐ UNKNOWN ☐ FRIABLE ☒ NON-FRIABLE ☐ BOTHDID AN AHERA ACCREDITED INSPECTOR INSPECT THIS SITE? ☒ YES ☐ NO ☐ ASSUMED ASBESTOS

INSPECTOR NAME: J. Larry Miles, Jr.

INSPECTOR PHONE: 912-507-5855

ACCREDITATION COURSE: Insp Refresher

CERTIFICATE NUMBER: 16220

EXPIRES: March 23, 2018

**SECTION 5 – WORK SCHEDULES (10 WORKING DAY ADVANCE NOTIFICATION REQUIRED FOR NON-EMERGENCY NOTIFICATIONS!!!)****CHECK IF SECTION IS BEING REVISED FROM A PREVIOUS SUBMITTAL ☐**

ABATEMENT START DATE

ABATEMENT END DATE

WORK DAYS (MON-SUN)

WORK HOURS (EX : 7-4)

DEMOLITION START DATE

DEMOLITION END DATE

WORK DAYS (MON-SUN)  
Mon-FriWORK HOURS (EX : 7-4)  
8-5

## SECTION 6 – ACM AMOUNTS, TYPE CODES, AND FEE CALCULATION

**CHECK IF SECTION IS BEING REVISED FROM A PREVIOUS SUBMITTAL ☐**

FIRST, LOCATE THE MATERIAL TO BE REMOVED IN **COLUMN A**. **COLUMN B** SHOWS THE USUAL NESHAP CATEGORY FOR THE MATERIAL. **COLUMN C** SHOWS THE CATEGORY THE MATERIAL WILL LIKELY BECOME DURING ABATEMENT, AND THAT **IS THE CODE THAT SHOULD BE USED FOR COMPLETING THIS FORM**. NOW, ENTER THE SQ. FT AND/OR L.F. AMOUNTS OF ACM TO BE ABATED DURING THIS PROJECT UNDER THE CORRECT HEADING ACCORDING TO TYPE IN **COLUMN D, E, AND/OR F**. THEN, LOCATE THE CORRESPONDING TYPE CODE(S) FOR THE MATERIAL(S) IN **COLUMN G** AND ENTER THE CODES IN THE SPACES PROVIDED BEFORE PROCEEDING TO THE FEE CALCULATION SECTION.

COL. A	COL. B			COL. C	SF OR LF AMOUNT TO BE ABATED DURING THIS PROJECT			COL. G1
ACM TYPE	USUAL NESHAP CATEGORY			WILL LIKELY BECOME WHEN ABATED	COL. D	COL. E	COL. F	ACM TYPE CODE
	CAT 1	CAT 2	RACM		CAT 1	CAT 2	RACM	
ASBESTOS ASPHALT SHINGLES	✓		✓	1				AAS
ASBESTOS CEMENT (TRANSITE) PANELS		✓	✓	2 OR RACM				ACP
ASBESTOS CEMENT (TRANSITE) ROOFING		✓	✓	RACM				ACR
ASBESTOS CEMENT (TRANSITE) SIDING SHINGLES		✓	✓	RACM				ACS
ASBESTOS FLASHING	✓		✓	1				AF
ASBESTOS GASKET	✓		✓	1 & RACM				AG
BOILER INSULATION			✓	RACM				BI
BUILT-UP ROOFING	✓		✓	1				BUR
COVE (BASEBOARD) MOLDING MASTIC	✓			1				CM
CEILING PLASTER			✓	RACM				CP
CEILING TILE			✓	RACM				CT
DUCT SEAM MASTIC	✓		✓	1				DSM
DUCT VIBRATION DAMPENERS	✓		✓	1				DVD
EXTERIOR (OUTSIDE) DUCT INSULATION	✓		✓	RACM				EDI
FELT DUCT TAPE			✓	RACM				FDT
FLOOR MASTIC	✓		✓	1	6200			FM
FIREPROOFING			✓	RACM				FP
FIREPROOFING AND OVERSPRAY			✓	RACM				FPO
FLOOR TILE	✓		✓	1				FT
FLOOR TILE AND MASTIC	✓		✓	1 OR RACM				FTM
INTERIOR (INSIDE) DUCT INSULATION	✓		✓	RACM				IDI
JOINT COMPOUND ONLY			✓	RACM				JC
LIGHT WEIGHT CONCRETE		✓	✓	2 OR RACM				LWC
OTHER: FLOOR LEVELING COMPOUND, CAULKING, ETC.)		✓	✓	1 OR RACM				OTR
PIPE INSULATION STRAIGHT RUNS			✓	RACM				PI
PIPE INSULATION ELBOWS AND FITTINGS			✓	RACM				PIE
RESILIENT FLOOR COVERINGS (SHEET FLOORING; LINOLEUM)	✓		✓	1 OR RACM				RFC
ROOF MASTICS AND COATINGS	✓		✓	1	190000			RMC
ROOFING SILVER COATING	✓		✓	1 OR RACM				RSC
TEXTURED CEILING			✓	RACM				TC
TEXTURED CEILING PLASTER			✓	RACM				TCP
TANK INSULATION			✓	RACM				TI
WALL BOARD AND JOINT COMPOUND			✓	RACM				WBJC
WINDOW GLAZING	✓		✓	1 OR RACM				WG
WALL PLASTER			✓	RACM				WP

**COL. G2:** Enter the ACM Type Codes From **Col. G 1** For Each Category Below.

**CAT 1:** FM RMC

**CAT 2:** \_\_\_\_\_

**RACM:** \_\_\_\_\_

**COL. D TOTAL**

196200

**COL. E TOTAL**

\_\_\_\_\_

**COL. F TOTAL**

\_\_\_\_\_

**CALCULATING FEES –** Now, Check The Box Next To The Project Type To Indicate Whether This Is A Residential Or Non-Residential Project.

**BOX H. IS THIS A RESIDENTIAL PROJECT?** ☐ **YES** (USE TOTAL FROM **COL. F** TO COMPLETE THIS SECTION)

RESIDENTIAL FEE SCHEDULE: 10¢ PER LF/SF OF FRIABLE ACM SUBJECT TO A *MINIMUM FEE OF \$25 AND A MAXIMUM FEE OF \$50 PER RESIDENCE*

RESIDENTIAL PROJECT COL. F TOTAL

H (a). \_\_\_\_\_ SF/LF

X .10  
EQUALS

**TOTAL FEES DUE AND PAYABLE NOW**  
H (b). \$ \_\_\_\_\_  
(NOT TO BE LESS THAN \$25 OR MORE THAN \$50)

**BOX I. IS THIS A NON – RESIDENTIAL PROJECT?** ☐ **YES** (USE TOTAL FROM **COL. F**. TO COMPLETE THIS SECTION)

NON-RESIDENTIAL FEE SCHEDULE: 10¢ PER LF/SF OF FRIABLE ACM SUBJECT TO A *MINIMUM FEE OF \$25 AND A MAXIMUM FEE OF \$1,000 PER FACILITY*

NON-RESIDENTIAL PROJECT COL. F TOTAL

I (a). \_\_\_\_\_ SF/LF

X .10  
EQUALS

**TOTAL FEES DUE AND PAYABLE NOW**  
I (b). \$ 1,000  
(NOT TO BE LESS THAN \$25 OR MORE THAN \$1,000)

Finally, Enter The Check Number For The Fee Payment You Are Submitting, Or Explain **WHY** The Fee Is Not Being Submitted And **WHEN** And By **WHOM** It Will Be Sent

**CHECK NUMBER** \_\_\_\_\_ **FOR THE AMOUNT SHOWN IN THE TOTAL FEES DUE COLUMN (S) ABOVE HAS BEEN SENT:** ☒ **YES**  
**IF NOT, WHY NOT?** \_\_\_\_\_

<b>SECTION 7 - WASTE TRANSPORTER, DISPOSAL SITE, AND BUILDING OWNER INFORMATION</b> CHECK IF SECTION IS BEING REVISED FROM A PREVIOUS SUBMITTAL <input type="checkbox"/>				
<b>WASTE TRANSPORTER</b>				
WASTE TRANSPORTER NAME			TRANSPORTER CONTACT PERSON:	
TRANSPORTER'S MAILING ADDRESS:				
CITY:	STATE:	ZIP:	PHONE:	FAX:
<b>DISPOSAL SITE</b>				
DISPOSAL SITE NAME:			DISPOSAL SITE COUNTY:	
DISPOSAL SITE STREET ADDRESS:				
CITY:	STATE:	ZIP:	PHONE:	FAX:
<b>PROJECT OWNER</b>				
PROJECT OWNER'S NAME:			OWNER'S REPRESENTATIVE:	
OWNER'S STREET ADDRESS:				
OWNER'S MAILING ADDRESS (IF DIFFERENT):				
CITY:	STATE:	ZIP:	PHONE:	FAX:
<b>SECTION 8 - WORK METHODS: METHOD OF DEMOLITION AND/OR RENOVATION ACTIVITY (DESCRIPTION OF WORK PRACTICES AND ENGINEERING CONTROLS TO BE USED)</b> CHECK IF SECTION IS BEING REVISED FROM A PREVIOUS SUBMITTAL <input type="checkbox"/>				
<b>SECTION 9 – ADDITIONAL PROJECT INFORMATION</b> <span style="float: right;">CHECK IF SECTION IS BEING REVISED FROM A PREVIOUS SUBMITTAL <input type="checkbox"/></span>				
WILL ASBESTOS REMAIN IN THE PROJECT AREA?			<input checked="" type="checkbox"/> NO	<input type="checkbox"/> YES <input type="checkbox"/> UNKNOWN
EXPLAIN 'YES' OR 'UNKNOWN':				
IF NO ASBESTOS IS PRESENT, WAS THIS PROJECT PREVIOUSLY ABATED?			<input type="checkbox"/> NO	<input type="checkbox"/> YES <input type="checkbox"/> UNKNOWN
PRIOR ABATEMENT COMPANY:			YEAR ABATED:	
THAT COMPANY CONTACT PERSON:			PHONE:	
<b>CERTIFICATION OF INFORMATION AND ACKNOWLEDGEMENT</b> CHECK IF SECTION IS BEING REVISED FROM A PREVIOUS SUBMITTAL <input type="checkbox"/>				
I THE UNDERSIGNED CERTIFY THAT AN INDIVIDUAL TRAINED IN THE PROVISIONS OF FEDERAL REGULATIONS (NESHAP/40 CFR PART 61 SUBPART M) WILL BE ON THE PROJECT SITE DURING DEMOLITION AND/OR RENOVATION ACTIVITIES DESCRIBED IN THE NOTIFICATION. EVIDENCE THAT THIS PERSON AND ALL OTHER PROJECT PERSONNEL HAVE ACCOMPLISHED THIS TRAINING WILL BE AVAILABLE FOR INSPECTION DURING NORMAL BUSINESS HOURS AND ANYTIME REGULATED ACTIVITIES ARE BEING CONDUCTED ON SITE.				
I FURTHERMORE UNDERSTAND THAT I AM RESPONSIBLE FOR THE ACCURACY AND COMPLETENESS OF THE INFORMATION CONTAINED WITHIN THIS NOTIFICATION SUBMITTAL, AND FOR PROMPT SUBMITTAL OF ALL REVISIONS, SUPPORTING DOCUMENTS, AND PROJECT FEES.				
PRINTED NAME OF AGENT/DESIGNEE:			SIGNATURE OF AGENT/DESIGNEE:	
DATE:				
REPRESENTING: <input type="checkbox"/> OWNER <input type="checkbox"/> CONSULTING FIRM <input type="checkbox"/> OTHER TRADE CONTRACTOR    OTHER TRADE TYPE:				
<input type="checkbox"/> GA ABATEMENT CONTRACTOR		COMPANY CERTIFICATE #	EXPIRATION DATE:	
<ul style="list-style-type: none"> <li>ALWAYS REFER TO THE INSTRUCTIONS WHEN IN DOUBT ABOUT PROPER COMPLETION OF ANY SECTION</li> <li>NEVER LEAVE BLANK SPACES – INSERT 'N/A' OR 'UNKNOWN' FOR ANY BLANK WHERE YOU DO NOT HAVE THE INFORMATION REQUESTED</li> <li>ALWAYS PRINT RESPONSES NEATLY AND LEGIBLY</li> <li>ALWAYS KEEP A COPY OF THIS FORM FOR YOUR RECORDS, AND PROVIDE COPIES TO ALL OTHER INVOLVED PARTIES</li> <li><b>DO NOT FAX THE ENTIRE NOTIFICATION WHEN SUBMITTING ADVANCE NOTIFICATIONS – USE THE FIRST PAGE ONLY OF THIS FORM. <u>SUBMIT THE ENTIRE FORM VIA MAIL</u> TO THE LOCKBOX FOR FEE PROJECTS OR TO THE EPD OFFICES FOR COURTESY &amp; DEMOLITION NOTIFICATIONS</b></li> <li>EPD NO LONGER ACCEPTS 'FAX ONLY DOCUMENTS' – DO NOT FAX THE ENTIRE PROJECT NOTIFICATION – SUBMIT THE ENTIRE FORM VIA MAIL.</li> <li>NEVER SUBMIT PROJECTS WHERE FEES ARE DUE WITHOUT ATTACHING THE REQUIRED FEE CHECK OR MONEY ORDER</li> <li>NOTIFICATIONS <u>WITH FEES MUST</u> BE MAILED TO THE EPD ASBESTOS FEES POST OFFICE ADDRESS. NOTIFICATIONS <u>WITHOUT FEES</u> MAY BE MAILED DIRECTLY TO THE EPD OFFICES.</li> <li>DO NOT SUBMIT 'TWO-SIDED' PHOTO COPIES</li> </ul>				
IT IS YOUR RESPONSIBILITY TO SUBMIT THIS FORM ACCURATELY COMPLETED AND ACCOMPANIED BY ALL APPLICABLE FEES. EFFECTIVE IMMEDIATELY, YOU WILL BE ISSUED A NOTICE OF DEFICIENCY FOR THE FIRST FAILURE TO SUBMIT A COMPLETE & ACCURATE FORM AND ALL APPLICABLE FEES, A NOTICE OF VIOLATION ON THE SECOND FAILURE, AND WILL BE REQUIRED TO ATTEND AN ENFORCEMENT CONFERENCE ON THE THIRD FAILURE. BEGINNING JULY 31, 2006, PROJECT NOTIFICATIONS SUBMITTED ON ANY FORM OTHER THAN THIS ONE FORMS WILL BE RETURNED AND YOU WILL BE REQUIRED TO RESUBMIT THE NOTIFICATION ON THE CORRECT FORM				

**INSTRUCTIONS FOR COMPLETING THE GEORGIA EPD  
PROJECT NOTIFICATION FOR ASBESTOS RENOVATION, ENCAPSULATION, OR DEMOLITION PROJECTS**

The Georgia EPD realizes that paperwork completion is tedious and time-consuming, but treats paperwork infractions with the same gravity with which it views work practice violations. It is incumbent upon all individuals engaged in regulated asbestos-related activities to become familiar with all state and federal requirements, including proper paperwork completion. The following instructions are a step-by-step guide that should lead you successfully through the notification completion process. Should you still have questions or need assistance with completion of the notification documents, please call the Asbestos Program at (404) 363-7026.

**HOW SHOULD YOU SUBMIT YOUR NOTIFICATION?**

**ADVANCE NOTIFICATIONS:** EPD ***STRONGLY*** discourages the submittal of advance notifications. However, if it is completely unavoidable due to extenuating circumstances, EPD requests that you not submit the entire project notification via fax. If you must submit an advance notification, **ONLY FAX THE COMPLETED FIRST PAGE OF THE NOTIFICATION FORM!** Submit the entire completed form via mail, following instructions for submittal of notifications that EITHER do or do not involve fees.

<b>FOR PROJECTS WHERE FEES ARE DUE:</b> EPD ASBESTOS FEES LOCKBOX POST OFFICE BOX 101173 ATLANTA, GEORGIA 30392 (SEE SECTION 6 FOR FEE CALCULATION INSTRUCTIONS)	<b>FOR PROJECTS WHERE FEES ARE NOT DUE:</b> EPD ASBESTOS PROGRAM ATTN: ASBESTOS NOTIFICATIONS 4244 INTERNATIONAL PARKWAY, SUITE 104 ATLANTA, GEORGIA 30334
--	--

**MAILED FORMS:** If your notification is a courtesy notification (see explanation below): a demolition only notification (the only two types of projects that are fee exempt); or a revision of a previously submitted notification where the fee amount **does not** change (a date change revision, for example), you may send the form directly to the EPD office at the address shown on the right above (*not* the lockbox address).

**WHAT TYPE OF NOTICE SHOULD YOU SUBMIT? (SECTION 1A)**

Asbestos Project Notifications will always fall into one of the following categories. ALWAYS check the box (☒) applicable to your current submittal:

- ☒ **ORIGINAL INITIAL** - The first time a project notification is submitted for the project to which the notification applies.
- ☒ **ANNUAL BLANKET** - The Annual Blanket Notification runs for one calendar year (January through December) and is designed solely for use on single large facilities where multiple small projects (less than 160 square feet, 260 linear feet, or 35 cubic feet in size) are to be conducted, but where the TOTAL amount of small abatement work will exceed these parameters. Typical candidates for the annual blanket notification include factories, power plants, and large educational facilities. Recipients of an Annual Blanket Notification must still submit a separate 10-Day project notification and fees when any single project exceeds the 'small project' definition. Each individual project handled under the Annual Blanket Notice must be less than 160 square feet, 260 linear feet or 35 cubic feet of friable asbestos containing material. A \$1,000 fee must be submitted with each Blanket Notification.
- ☒ **REVISION** - To notify the EPD of any changes to the project after the Original Initial notification has been submitted. Correct use of the revision option can prevent the need to submit a separate Notice of Change for the project, and is a convenience for Contractors and Building Owners when used as it is designed to be used. To submit a revision, CHECK THE BOX (☒) in Section 1A and list the revision number. Also check the box in the heading of the section you are revising, strike through the incorrect information, and insert the correction. If additional fees are due, be sure to submit them to the lockbox and include the additional fee check information in the fee schedule. DATE CHANGE REVISIONS SHOULD BE SENT DIRECTLY TO THE EPD OFFICE ***STREET ADDRESS***. For all revisions, re-sign and re-date the certification section of the project notification before resubmitting.
- ☒ **CANCELLATION** - Many times despite the best of planning a project must be cancelled. To cancel a project, resubmit the notification form IN WRITING and place a (☒) in the cancellation box. You may submit a written Letter of Credit for fees previously paid for this project and mail it to the EPD office along with the cancelled notification. If you are requesting a refund, be sure to include your federal employer identification (FEI) or Social Security number on your refund request, and allow 6-8 weeks for the refund to be processed and mailed to you.

**WHAT TYPE OF PROJECT ARE YOU CONDUCTING? (SECTION 1B)**

This section is designed to allow you to communicate the type of project you will be conducting. You can also use this space to indicate that you are submitting an emergency notification. Frequently, more than one of these boxes should be checked (☒) to completely convey the type of project you will be conducting. It is very important that ALL applicable boxes be checked.

- ☒ **RENOVATION/ABATEMENT ONLY** - Where the project only involves the removal and disposal of asbestos containing materials. "Renovation" means the altering of, taking out, stripping, clean up, disposal of, or removal of friable or potentially friable asbestos containing materials from any facility, facility component or residential dwelling, equal to or greater than 10 square feet or 10 linear feet, for renovation or maintenance purposes.
- ☒ **RENOVATION/ABATEMENT PRIOR TO DEMOLITION** - Removal/abatement of friable asbestos containing materials equal to or greater than 10 square feet or 10 linear feet (see definition of Renovation Only above), in preparation for demolition activities to be performed by someone else.
- ☒ **DEMOLITION ONLY** - Where the projects only entails demolition of any structure that has been thoroughly inspected for the presence or absence of asbestos. "Demolition" means the wrecking or taking out of any load supporting structural member of a facility together with related handling operations, or the intentional burning of any structure. *Notification is required regardless of the presence or absence of asbestos containing materials.*
- ☒ **ENCAPSULATION** - A project in which special coatings approved for asbestos encapsulation will be used to cover the asbestos containing materials and prevent any future release of asbestos fibers. 'Encapsulation' means the process of coating, binding, or resurfacing walls, ceilings, pipes, or other structures with a sealant to prevent friable asbestos from becoming airborne.
- ☒ **JOINT RENOVATION/DEMOLITION** - Where both renovation and demolition activities as described above will be conducted by the same Contractor. In other words, if the same Contractor will perform the removal/abatement of friable asbestos containing materials equal to or greater than 10 square feet or 10 linear feet followed by demolition activities, then he may submit a Joint Notification. If demolition is to be conducted by a different company, that company must submit a separate notification.
- ☒ **ORDERED DEMOLITION** - A demolition project ordered by a government agency. If the property has been condemned, the Order of Condemnation must be included with the project notification.

## **ADDITIONAL PROJECT NOTATIONS**

- ☒ **EMERGENCY** – Abatement, Encapsulation or Demolition projects that were unplanned, but result from a sudden, unexpected event that if not immediately attended to presents a safety or public health hazard, is necessary to protect equipment from damage, or is necessary to avoid imposing an unreasonable financial burden. *Waiver of the required 10 working day notification period will be granted on a case-by-case basis.* A letter of explanation regarding the emergency situation from the Owner of the Project, or their representative, must accompany the notification. EPD must be notified of the emergency situation within 24 hours from the time of its occurrence, or from the time you are contacted with a request for emergency work to be performed. *We highly recommend you call an associate in the EPD Asbestos Program to discuss the situation to obtain their agreement on the emergency project.* The main number for the Asbestos Program is 404-363-7026. Complete and fax the FIRST PAGE only of the Project Notification form to (404)362-2563. The entire original notification and fee payment must be mailed to the Lockbox address within 7 days from the date of emergency work beginning.
- ☒ **COURTESY** – A Courtesy Notification is ONLY submitted for small asbestos abatement/disturbance/encapsulation projects that ordinarily would not be regulated. In other words, any project involving friable asbestos removal of less than 10 square feet or 10 linear feet; it may also be used to cover a non-friable asbestos removal project.

## **SECTION 2 – SITE INFORMATION**

**PROJECT NAME** - Identify the exact location where abatement or demolition work is going to take place. Provide the name of the building, company, or other description of all structures involved in the project here. For example: "Vacant House", "Residence", "Commercial Bldg", "ABC Company", "Office Bldg"). If the project is part of a DOT road-widening project, please include parcel number and structure number.

**PROJECT ADDRESS** - Street address where abatement, encapsulation, or demolition will take place.

\*If project involves multiple buildings/structures at one location, list all addresses, building names, unit numbers, etc. Use a separate sheet of paper as an attachment, if necessary.

\*If project involves multiple buildings/structures at different addresses, you may group together those addresses on the same street and/or adjacent streets, (within a few block radius). Use a separate sheet of paper as an attachment, if necessary. Include a site map or diagram showing locations.

- **CITY/ZIP/COUNTY** - Complete all areas. *YOU MUST LIST THE COUNTY – DO NOT SUBMIT THE NOTIFICATION WITHOUT THE COUNTY NAME INCLUDED!*
- **NEAREST MAJOR INTERSECTION** - For example: "State Hwy 41 near Windy Hill Rd"; "South Houston Lake Rd near State Hwy 96")
- **BLDG SIZE IN SQ. FEET** - Square foot measurement of the entire building (all floors and spaces) combined.
- **AGE OF BLDG IN YEARS** - Age of building in years.
- **NUMBER OF FLOORS IN BUILDING** - Total number of floors in building, including sub-basement, basement, mezzanine, attic, and penthouse. Each level that can be occupied should be counted as a separate floor.
- **SPECIFIC LOCATION OF ASBESTOS BEING REMOVED** - Provide specific area(s) of the structure that are being abated or demolished. For example: "Roof", "Kitchen Floor", "Steam Pipes in Basement", "Throughout Building", "Hallway", "Floor Number \_\_\_\_\_", "Room Number \_\_\_\_\_", etc).

## **SECTION 3 – PROJECT CONTRACTORS**

In this section, you must list all CONTRACTORS to be involved with the actual removal and/or demolition of the project. If you are a Contractor removing the asbestos prior to a demolition, you should still list the name of the demolition company if known. **BE SURE TO CHECK (☑) THE CORRECT BOX FOR THE TYPE OF PROJECT YOU ARE DIRECTLY RESPONSIBLE FOR CONDUCTING AND FOR WHICH YOU ARE SUBMITTING THE NOTIFICATION!!!**

### **3A – ABATEMENT CONTRACTOR** – Name of the company that will perform the actual asbestos renovation/abatement.

- **CONTRACTOR STREET ADDRESS** – The actual physical location of the Asbestos Removal Contractor's place of business. **DO NOT USE A POST OFFICE BOX IN THIS SPACE!**
- **COMPANY CERTIFICATE NUMBER** – Recently issued asbestos contractor company certificates include a new identifying number. For established contractors, this number is being assigned as licenses are renewed, so if you have not yet been issued a certificate number there is no need for alarm. You will be issued the number during your next license renewal. The certificate issued for your Company license bears or will bear a number similar to this: "20-0708-123". When your new certificate is issued, or if you already have the revised Asbestos Contractor License Certificate, this is the number you should list in the Company Certificate space.
  - **CITY/STATE/ZIP/PHONE/FAX** – You must complete each space.
  - **LICENSED AGENTS NAME** – Name of the person licensed by EPD as the Principal Agent for this company
  - **AGENT'S ID NUMBER** – The agent's identification card issued by EPD bears a number similar to this one: "50123", and should be placed here.
  - **EXPIRES** – The date on which the above described identification card expires.
  - **CELL PHONE** – The cellular or pager number for the Principal Agent.

### **3B – OTHER (DEMO/SUB/GENERAL) CONTRACTOR** – Name of company performing work OTHER THAN asbestos removal.

- **JOB CONTRACTED** – Place a short, concise description of the additional work contracted here. For example: "General Contractor", "Demolition", "Clearing & Grading", "Debris Clean-up", etc.
- **OTHER CONTRACTOR STREET ADDRESS** – The actual physical location of this Contractor's place of business. **DO NOT USE A POST OFFICE BOX IN THIS SPACE!**
- **CITY/STATE/ZIP/PHONE/FAX** – You must complete each blank.  
(If more than 2 Contractors are involved with the project, use a separate sheet as an attachment to provide additional information)

## **SECTION 4 – ASBESTOS CONTAINING MATERIAL(S) (ACM) INFORMATION** **IS ASBESTOS PRESENT?**

- **YES** – A thorough inspection for the presence of absence of asbestos has been conducted and the written results indicate that asbestos **IS** present.
- **NO** – A thorough inspection for the presence of absence of asbestos has been conducted and the written results indicate that asbestos **IS NOT** present.
- **FRIABLE** – "Friable Asbestos-Containing Material" means any material which is applied onto ceilings, walls, structural members, piping, boilers, tanks, pumps, ductwork or any other part of the building containing more than 1 percent asbestos, by weight, and which when dry may be crumbled, pulverized, or reduced to powder by hand pressure. (See Definitions Section of Instructions & Section 6 of Notification Form)
- **NON-FRIABLE** – "Non-Friable Asbestos-Containing Material" means any asbestos-containing material that does not meet the definition of "FRIABLE". See Definitions Section of Instructions & Section 6 of Notification Form)
- **BOTH** – Both "Friable" and "Non-friable" materials are present on this project.

## DID AN AHERA ACCREDITED INSPECTOR INSPECT THIS SITE?

Was the portion of the abatement project, or demolition area described in Section 2 of this form, thoroughly inspected by an AHERA Accredited Asbestos Inspector? Check ☒ the appropriate answer.

- **YES**
- **NO**
- **UNKNOWN**
- **ASSUMED ASBESTOS** - A thorough inspection for the presence of absence of asbestos HAS NOT been conducted but based on the type of material(s) being disturbed the decision has been made to treat the material(s) as ACM, meaning that all necessary precautions and procedures will be followed.
- **INSPECTOR NAME** – Name of individual who performed the inspection.
- **INSPECTOR PHONE** – Number at which the Inspector may be reached, starting with area code.
- **ACCREDITATION COURSE** – Name of course taken to obtain **ASBESTOS INSPECTOR** accreditation. For example: "Asbestos Inspector Initial", "Inspector Refresher"
- **CERTIFICATE NUMBER** – Number on the Asbestos Inspector Certificate of Completion issued by the Training Provider.
- **EXPIRES** – Expiration date on certificate issued by Training Provider.

## SECTION 5 – WORK SCHEDULES

### **IMPORTANT NOTICE: A 10 (TEN) WORKING DAY NOTIFICATION IS REQUIRED FOR NON-EMERGENCY NOTIFICATIONS PRIOR TO COMMENCING ANY REGULATED ASBESTOS ACTIVITY!!!!**

WORKING DAYS ARE CONSIDERED MONDAY THROUGH FRIDAY. A HOLIDAY FALLING ON THESE DAYS WILL BE COUNTED AS A WORKING DAY.

WORKING DAYS ARE COUNTED FROM THE DATE OF:

- US POST OFFICE POSTMARK DATE
- FEDEX/UPS SHIPPING DATE
- HAND DELIVERY OF NOTIFICATION
- DATE OF ADVANCE NOTIFICATION VIA FAX
- ELECTRONIC FILING OF PROJECT NOTIFICATION

NOTIFICATIONS POSTMARKED ON A SATURDAY OR SUNDAY DO NOT BEGIN THE 10 WORKING DAY NOTIFICATION PERIOD UNTIL THE FOLLOWING MONDAY.

### **FOR ALL PROJECTS –**

Provide the project START date and END dates. NOTE: If the Consultant or Project Owner is submitting the project notification, and project dates are as yet undetermined, submit dates as **TBD** (To Be Determined). THE ABATEMENT OR DEMOLITION CONTRACTOR WHO RECEIVES THE CONTRACT MUST SUBMIT A REVISION TO UPDATE THE PROJECT DATES BEFORE WORK BEGINS.

**WORK DAYS** - Provide actual days of the week on which work will be performed – NOT the number of days worked per week. For example: "M, Tu, Th" or "M-F"

**WORK HOURS** - Provide the actual times of the day the crew will be on site – NOT the number of hours worked per day. For example "7A – 4P" or "5P – MIDNIGHT"

**PHASED PROJECTS** - If multiple buildings/structures are involved, break project into Phases, and identify project dates per Phase. Use an additional page to described phased project start and stop dates and work hours in detail.

## SECTION 6 – ACM TYPES INFORMATION AND FEE SCHEDULE

Use this section to identify and type and total quantity of asbestos that will be disturbed during this project and calculate fees owed based on your findings. All ACM's identified in Section 4 must be described completely here.

### **ACM TYPE(S)**

- Step 1 - Locate the type of ACM you will be disturbing in COLUMN A. Use the Category 1, 2 and RACM headings in COLUMN B to determine the material's current status, then locate the category the material will **MOST LIKELY BECOME** as a result of your abatement activities in COLUMN C.
- Step 2 - Show the combined LINEAR FOOT (LF) and/or SQUARE FOOTAGE of the material to be disturbed in COLUMN D, E, or F, depending on the determination made from the code in COLUMN C
- Step 3 - In COLUMN G1, circle the corresponding ACM type code for any material amount listed in COLUMN(S) D, E, or F. In COLUMN G2, enter the type code(s) in the space(s) labeled CAT 1, CAT 2, and RACM; and
- Step 4 – Total COLUMNS D, E, and F and insert the total(s) in the appropriate space(s) provided.

### **DEFINITIONS:**

**CATEGORY 1 NON-FRIABLE ACM** includes asbestos-containing packing, gaskets, resilient floor covering, mastics, and asphalt roof products that contain greater than 1% asbestos. *Category 1 materials that will likely become friable as a result of removal activity must be listed in the RACM category instead of here.*

**CATEGORY 2 NON-FRIABLE ACM** includes any material, excluding Category 1 non-friable ACM, containing more than 1% asbestos that, when dry, cannot be crumbled, pulverized, or reduced to powder by hand pressure. These are the asbestos-cement products, including Transite. *Category 2 materials that will likely become friable as a result of removal activity must be listed in the RACM category instead of here.*

**RACM (Regulated Asbestos-Containing Material)** means friable asbestos containing material, Category 1 non-friable ACM that has become friable, Category 1 non-friable ACM that will be or has been subjected to sanding, grinding, cutting, or abrading, or Category 2 non-friable ACM that has a high probability of becoming or has become crumbled, pulverized, or reduced to powder by the forces expected to act on the material in the course of demolition or renovation operations

## **FEE CALCULATION SECTION**

Step 1 - Use the check box ☒ to indicate whether the project is RESIDENTIAL (BOX H.) or NON-RESIDENTIAL (BOX I.).

Step 2 - Place the total from COLUMN F on the correct line provided in either "BOX H(a). – RESIDENTIAL" or "BOX I(a). – NON-RESIDENTIAL".

Step 3 – Multiply the number in BOX H.(a) or I(a) by .10 (Ten Cents - 10¢) and place the resulting amount in line H(b). or I(b). **THE RESULTING FIGURE IS THE AMOUNT OF FEES OWED AND WHICH MUST ACCOMPANY THE NOTIFICATION, SUBJECT TO THE MINIMUM/MAXIMUM FEES OUTLINED BELOW. IF FEES ARE DUE FOR ANY PROJECT, SHOW THE CHECK NUMBER AND TOTAL AMOUNT OF FEES DUE IN THE SPACE PROVIDED. IF YOU ARE NOT IMMEDIATELY SUBMITTING THE FEE CHECK, YOU MUST EXPLAIN WHY NOT AND IDENTIFY WHO IS RESPONSIBLE FOR THE FEE PAYMENT AND WHEN IT WILL BE SUBMITTED.**

**RESIDENTIAL PROJECTS:** Residential projects are subject to a minimum fee of \$25 and a maximum fee of \$50. THEREFORE, THE FEE YOU SUBMIT FOR RESIDENTIAL PROJECTS SHOULD NEVER BE LESS THAN \$25 AND NEVER BE MORE THAN \$50.

**NON-RESIDENTIAL PROJECTS:** Non-residential projects are subject to a minimum fee of \$25 and a maximum fee of \$1,000. THEREFORE, THE FEE YOU SUBMIT FOR NON-RESIDENTIAL PROJECTS SHOULD NEVER BE LESS THAN \$25 AND NEVER BE MORE THAN \$1,000.

### **DEFINITIONS:**

**RESIDENTIAL PROJECT:** A residential dwelling means any family residence or apartment building with four or fewer dwelling units.

**NONRESIDENTIAL PROJECT:** A non-residential project means any project conducted on any building that would fall outside the guidelines established by the definition of a residential dwelling. I.E.: any non-residential structure, or any residential structure with five or more dwelling units.

## **SECTION 7 – BUILDING OWNER, WASTE TRANSPORTER, AND DISPOSAL SITE INFORMATION**

### **WASTE TRANSPORTER:**

- **NAME OF COMPANY**
- **CONTACT NAME:** Name of person at Transport Company to call, if necessary.
- **ADDRESS/CITY/STATE/ZIP/PHONE/FAX:** Complete all areas

### **DISPOSAL SITE INFORMATION**

- **WASTE DISPOSAL SITE NAME:** Name of Landfill
- **DISPOSAL SITE COUNTY:** Provide County name
- **ADDRESS/CITY/STATE/ZIP/PHONE/FAX:** Complete all areas

### **BUILDING OWNER**

- **OWNER OF PROJECT SITE/FACILITY:** Name of legal owner of facility/property.
- **OWNER'S REPRESENTATIVE:** Name of person (other than Contractor) acting on behalf of Owner, particularly if completing & submitting this form.
- **OWNER'S STREET ADDRESS:** For service of legal process if required.
- **OWNER'S MAILING ADDRESS**
- **CITY/STATE/ZIP/PHONE/FAX** Complete all areas
- **TELEPHONE NUMBER:** Number at which Contact person may be reached, starting with area code

## **SECTION 8 – WORK PRACTICES**

The method(s) of demolition and/or renovation activity and a description of work practices and engineering controls to be used on this project. Describe fully what types of abatement and/or demolition activities are going to take place, the method(s) of removal and/or demolition that will be used, and controls in place to prevent asbestos emissions. Describe what clearance criteria will be used. Attach a separate sheet of paper if more room is needed to answer this section. FOR EXAMPLE:

- *"Wet spud bar and chemical removal of FT M with critical barriers. 1 negative air. Visual clearance only";*
- *"Wet spud bar removal of ACS over 6 mil plastic on ground. Place in plastic lined roll off dumpster. Visual clearance only"*
- *"Demo with front end loader. Push down, wet, and machine load into 30 CY roll off dumpster"*

## **SECTION 9 - ADDITIONAL PROJECT INFORMATION**

- **WILL ASBESTOS REMAIN IN THE PROJECT AREA?** Please answer "YES", "NO", or "UNKNOWN", and explain a YES or UNKNOWN answer.
- **IF NO ASBESTOS IS PRESENT, WAS THIS THE RESULT OF A PREVIOUS ABATEMENT?**
- **IF THE PROJECT WAS PREVIOUSLY ABATED, PROVIDE ALL REQUESTED INFORMATION FOR THE PRIOR ABATEMENT COMPANY.**

### **CERTIFICATION OF INFORMATION AND ACKNOWLEDGEMENT**

**PROVIDE ALL REQUESTED INFORMATION - DO NOT LEAVE ANY SPACES BLANK AND INCLUDE SIGNATURE**

**PRINTED NAME OF AGENT/DESIGNEE** - Print or type full name of person submitting form

**SIGNATURE OF AGENT OR DESIGNEE** - The person submitting this form must sign here

**DATE** - Date project notification is signed

**REPRESENTING** - Place check (☒) mark at appropriate title

- ☒ **OWNER** - Owner of Facility in which project is being performed
- ☒ **CONSULTING FIRM** - Asbestos or Environmental Consultant; Architect, Engineer
- ☒ **OTHER TRADE CONTRACTOR/OTHER TRADE TYPE** – Representing any other trade involved on this project. For example: "General Contractor", "Demolition", "Clearing & Grading", "Debris Clean-up", etc.
- ☒ **GA ABATEMENT CONTRACTOR** – An EPD Licensed Asbestos Abatement Contractor
  - **COMPANY CERTIFICATE NUMBER** – See "Company Certificate Number" Information in Section 3 Instructions.
  - **EXPIRATION DATE** - The date the company certificate expires

**NOTE:** If an Advance Project Notification form is submitted by someone other than the Contractor(s) who perform the asbestos abatement or demolition activities - such as the Consultant or Owner - in order to start the 10 working day notification period while the contract is out for bid, A REVISED NOTIFICATION MUST BE SUBMITTED BY THE CONTRACTOR TO WHOM THE PROJECT IS AWARDED BEFORE WORK BEGINS, AND THAT CONTRACTOR MUST SIGN THE CERTIFICATION AREA OF THE REVISED NOTIFICATION FORM.



ARROWOODENV.COM

OFFICE: 912.920.2895

FAX: 888.880.3520

P.O. Box 61237 Savannah, GA 31420

Via E-Mail

May 24, 2017

Mr. Nathaniel Panther, PE  
Chatham County Engineering Department  
124 Bull Street  
Savannah, Georgia 31401

RE: Report of TCLP Lead Results for Demolition Debris  
Chatham County Jail  
Montgomery Street  
Savannah, Georgia  
Arrowood Project No. 2017-038

Dear Mr. Panther:

Arrowood Environmental Group (Arrowood) is pleased to provide you the results of the TCLP Lead results of the demolition debris for the building collected on May 12, 2017 at the above referenced project site. The purpose of this sampling was to determine if the debris from the demolition of the building would meet the requirements to be characterized as normal construction and demolition debris. The sampling was conducted by Mr. J. Larry Miles, Jr., MS, CSP of Arrowood.

The structure was formerly used as a county jail. It is constructed of pre-stressed cast concrete with four floors plus a basement. The walls are primarily painted concrete masonry with plaster ceilings. There is a limited amount of acoustical drop ceiling in the first floor office area. There is 12-inch floor tile (white with brown specks) in the hallways of all floors. There are limited areas on the first floor where some original floor tile was replaced (12-inch green in the Mop room and gray in bath room) and some areas on the fourth floor with blue and white 12-inch floor tile. The office area and halls have black cove base.

There are mechanical rooms in the basement and third and fourth floors. All the piping is insulated with paper wrapped fiberglass insulation with plastic elbows. The insulation is similar in all three mechanical rooms. There are two hot water storage tanks in the mechanical room on the third floor that were insulated with a mud/cement insulation and wire mesh. There is an HVAC expansion joint on the HVAC unit in the third floor mechanical room.





## SAMPLING ACTIVITIES

The Site is scheduled to be demolished, therefore a representative sample of the anticipated demolition debris was collected and analyzed for hazardous waste characteristics for lead (TCLP Lead). A 100 gram representative sample was collected of the buildings construction materials and was submitted to Environmental Hazards Laboratory for analysis. The results of the sampling are outlined in Table 1 below.

Table 1: TCLP Lead Sample Results

Sample No.	Sample Location	Results mg/L	US EPA Standard 5 mg/L
CCJ-T	Montgomery Street	<b>&lt;0.50</b>	<b>Below Standard</b>

## FINDINGS / RECOMMENDATIONS

A representative sample of the building's demolition debris was collected and analyzed for hazardous waste characterization (Lead) and found to be below the US EPA hazardous waste standard and therefore is classified as a nonhazardous waste and may be disposed of in a Municipal Solid Waste Landfill.

## CLOSING

Should you have any questions regarding the information contained in this report, please feel free to call Larry Miles at 912-507-5855. We appreciate this opportunity to provide these services to you and look forward to working with you again in the future.

Sincerely,

J. Larry Miles, Jr. MS, CSP

Attachments (1)



Environmental Hazards Services, L.L.C.  
7469 Whitepine Rd  
Richmond, VA 23237  
Telephone: 800.347.4010

## Lead TCLP Analysis Report

Report Number: 17-05-02750

Client: Arrowood Environmental Group, Inc.  
P.O. Box 61237  
Savannah, GA 31420

Received Date: 05/22/2017  
Analyzed Date: 05/23/2017  
Reported Date: 05/23/2017

Project/Test Address: Chatham County Jail; Savannah, GA

Client Number:  
201388

Fax Number:  
888-880-3520

# Laboratory Results

Lab Sample Number	Client Sample Number	Sample Description	Sample Weight (g)	Concentration ppm (mg/L)	Narrative ID
17-05-02750-001	CCJ-T	Building Debris	100	<0.50	

Regulatory Limit: 5.0 mg/L

Reporting Limit: 0.50 mg/L

Method: EPA SW846 1311/3010A/7000B

Analyst: Elaine King

Reviewed By Authorized Signatory:

*Melissa Kanode*

Missy Kanode  
QA/QC Clerk

Method EPA SW846 1311 recommends 100g for analysis.

The condition of the samples analyzed was acceptable upon receipt per laboratory protocol unless otherwise noted on this report. All internal quality control requirements associated with the batch were met, unless otherwise noted. Results represent the analysis of samples submitted by the client. Sample location, description, area, volume, etc., was provided by the client. This report cannot be used by the client to claim product endorsement by NVLAP or any agency of the U.S. Government. This report shall not be reproduced except in full, without the written consent of the Environmental Hazards Service, L.L.C. California Certification #2319 NY ELAP #11714.

Legend	g = gram	ppm = parts per million	mg/L = milligrams per liter
--------	----------	-------------------------	-----------------------------



**EHS Laboratories**

Environmental Hazards Services, LLC

SHIP TO: 7469 Whitepine Rd. Richmond, VA 23237

Phone: (800) 347-4010 FAX: (804) 275-4907

ONLINE CLIENT PORTAL AVAILABLE FOR ANALYSIS RESULTS AT:

www.leadlab.com

17-05-02750



Page 1 of 1

# Metals Chain-of-Custody Form

Company Name: Arrowood Environmental Group, Inc.

Account Number: 201388

Address: PO Box 61237

City/State/zip: Savannah, GA 31420

Phone: 9125075855

Email: lmiles@arrowoodenv.com

Fax: 8888803520

Due Date:

05/23/2017

(Tuesday)  
AE

Project Name / Testing Address: Chatham County Jail

City/State (Required): Savannah, GA

Collected by: L Miles

Certification Number:

P.O. #:

TURN AROUND TIMES: IF NO TAT IS SPECIFIED, SAMPLE(S) WILL BE PROCESSED AND CHARGED AS 3 - DAY TAT.

☒ 1 Day

☐ 2 Day

☐ 3 Day

☐ \* Same Day - Must Call Ahead

☐ \* Weekend - Must Call Ahead

No.	Client Sample ID	Collection Date	Time	METALS					OTHER METALS				PARTICULATES				AIR		Comments	
				Pb TCLP	TCLP RCRA 8	RCRA 8 Total Metals	Toxic Metal Profile	Welding Fume Profile	Lead	Lead	Lead	Total Nuisance Dust	Respirable Dust	TSP Gravimetric	TSP Pb	PM- 10	Total Time (minutes)	Flow Rate (l/min)		Volume (Total Liters)
1	CCJ-T	5/12	A.M./P.M.	✓						Lead										
2			A.M./P.M.							Lead										
3			A.M./P.M.							Lead										
4			A.M./P.M.							Lead										
5			A.M./P.M.																	
6			A.M./P.M.																	
7			A.M./P.M.																	
8			A.M./P.M.																	
9			A.M./P.M.																	
10			A.M./P.M.																	

Released by: L Miles Signature: [Signature] Date/Time: 5/18/17 2:10 PM

Received by: STONE Signature: [Signature] Date/Time: 5/22/17 11:02 AM